

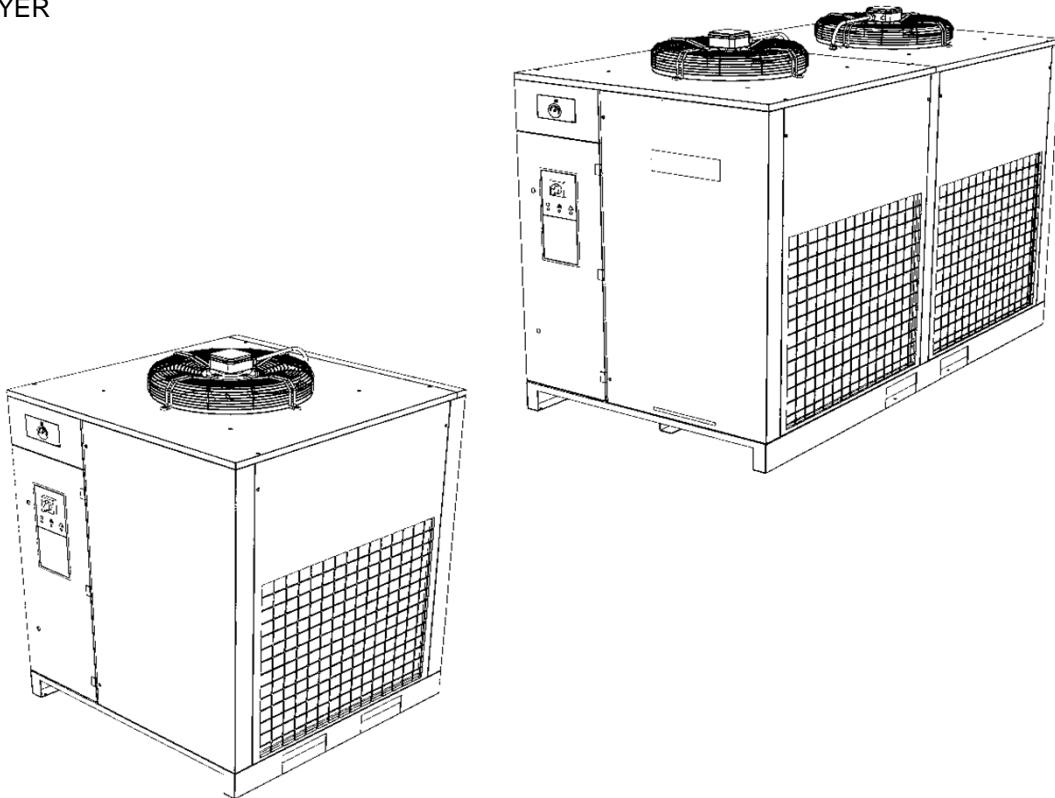


Code	
2200781901	03
Edition	
09/2012	

SPARES PARTS LIST

**QPNC0750, QPNC1000, QPNC1250, QPNC1600, QPNC1800, QPNC2200,
QPNC2500, QPNC 3000**

AIR DRYER



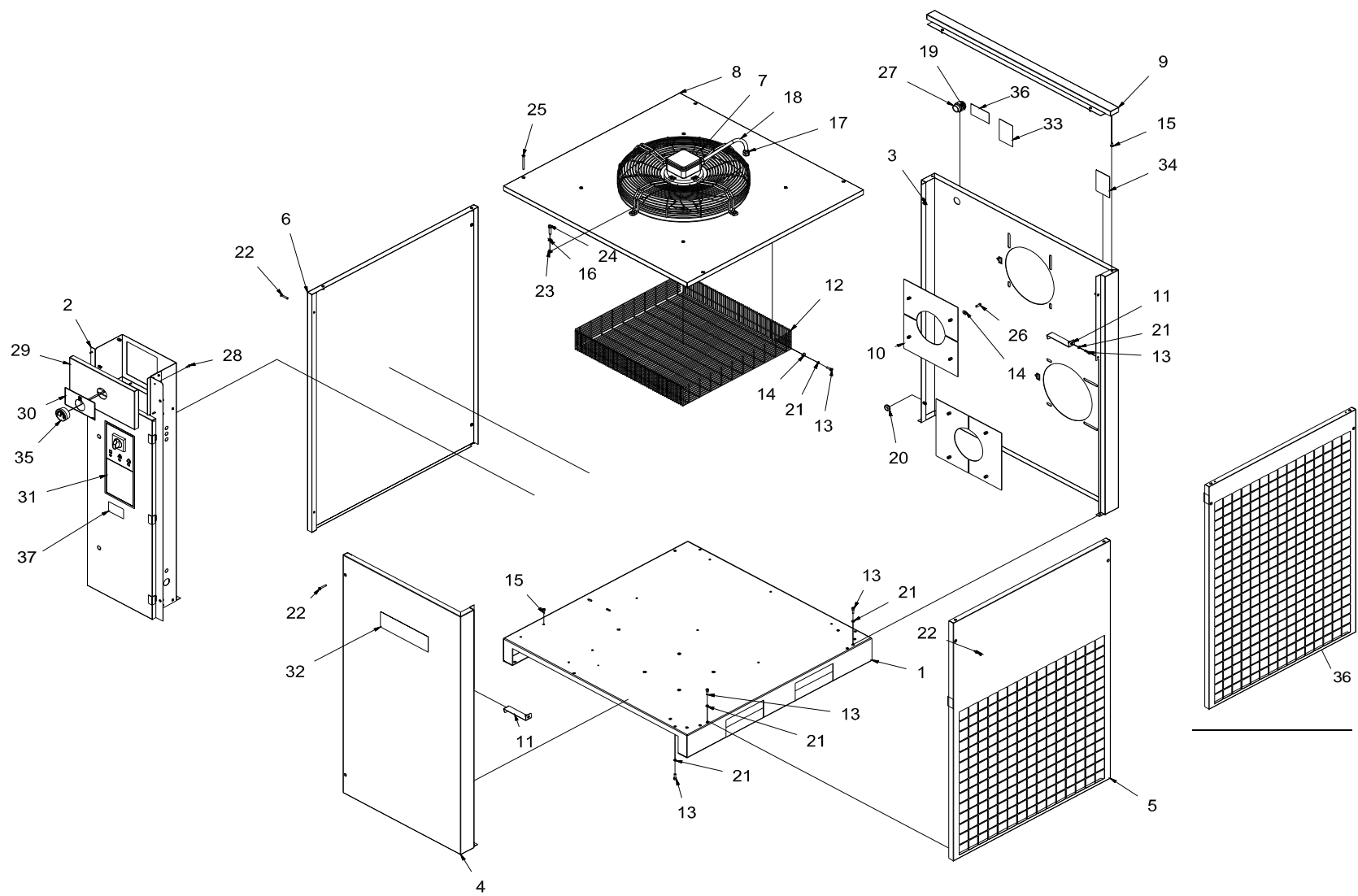
SPARES PARTS LIST

**QPNC0750, QPNC1000, QPNC1250, QPNC1600 , QPNC1800, QPNC2200, QPNC2500,
QPNC 3000**

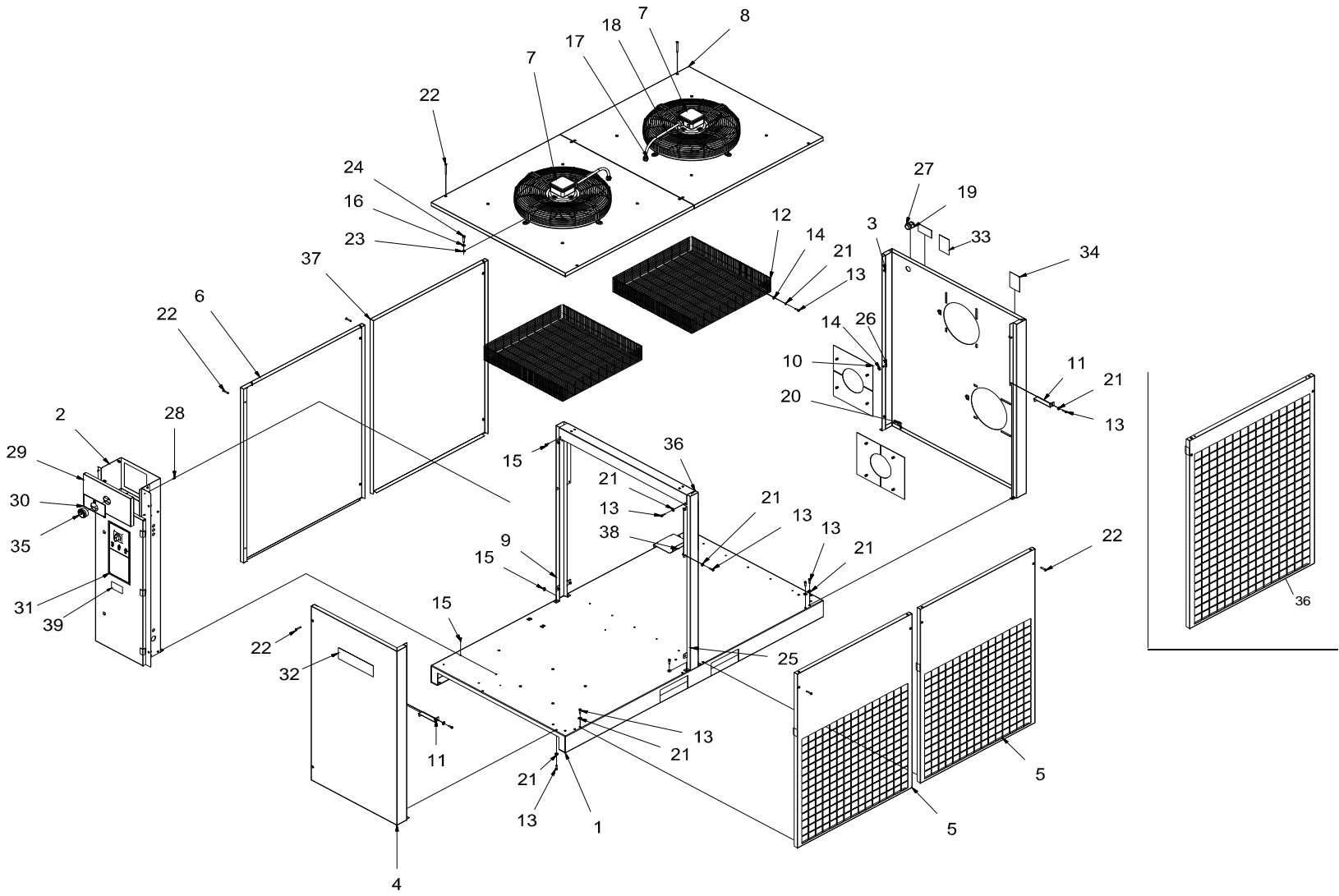
AIR DRYER

Type	Code	V. Dryer
QPNC0750	4102 0012 09	460/3/60
QPNC1000	4102 0012 10	460/3/60
QPNC1250	4102 0012 11	460/3/60
QPNC1600	4102 0012 40	460/3/60
QPNC1600	4102 0012 12	460/3/60
QPNC1800	4102 0012 13	460/3/60
QPNC2200	4102 0012 14	460/3/60
QPNC2500	4102 0012 15	460/3/60
QPNC3000	4102 0013 23	460/3/60

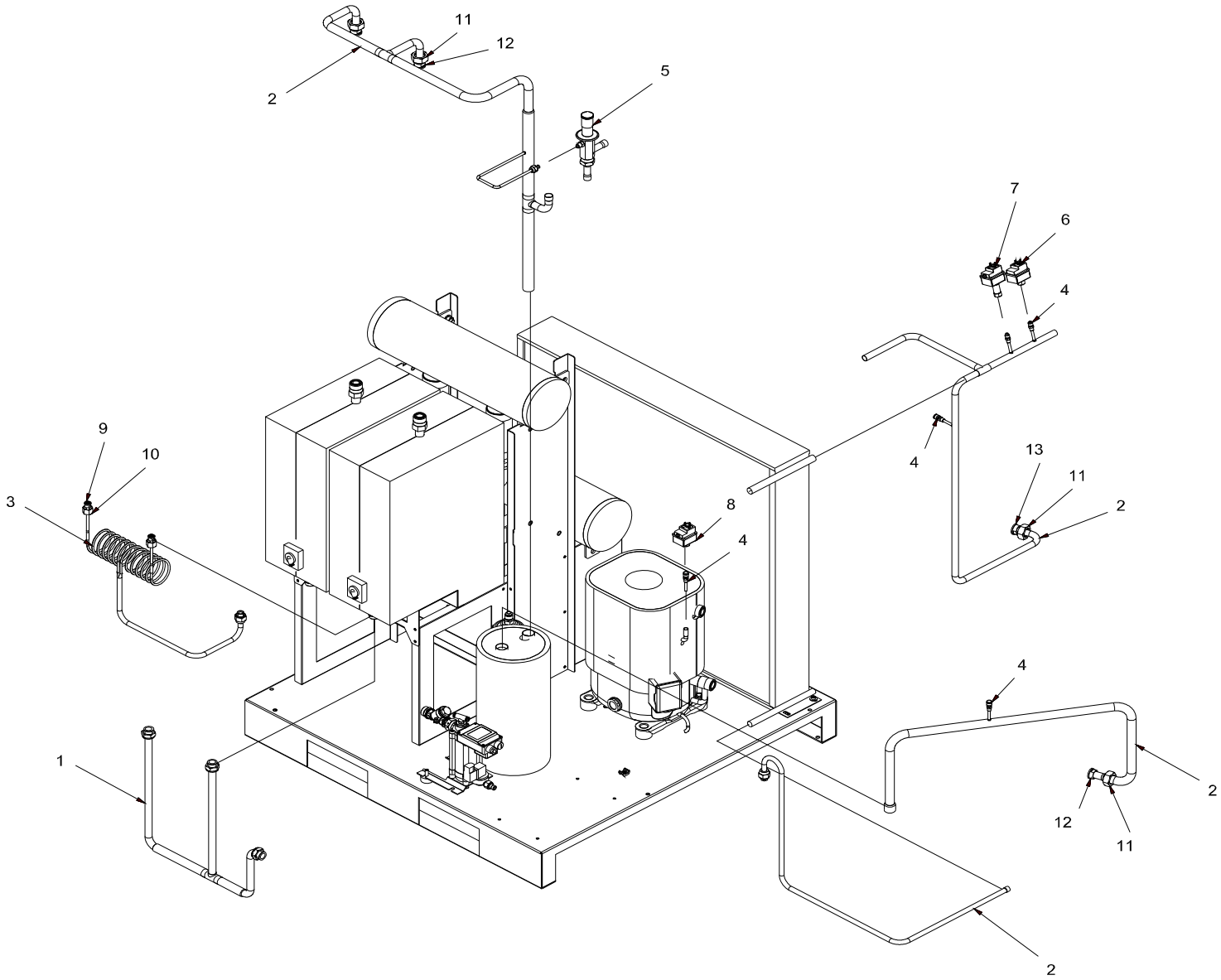
TAB. 1 (QPNC0750, QPNC1000, QPNC1250, QPNC1600)

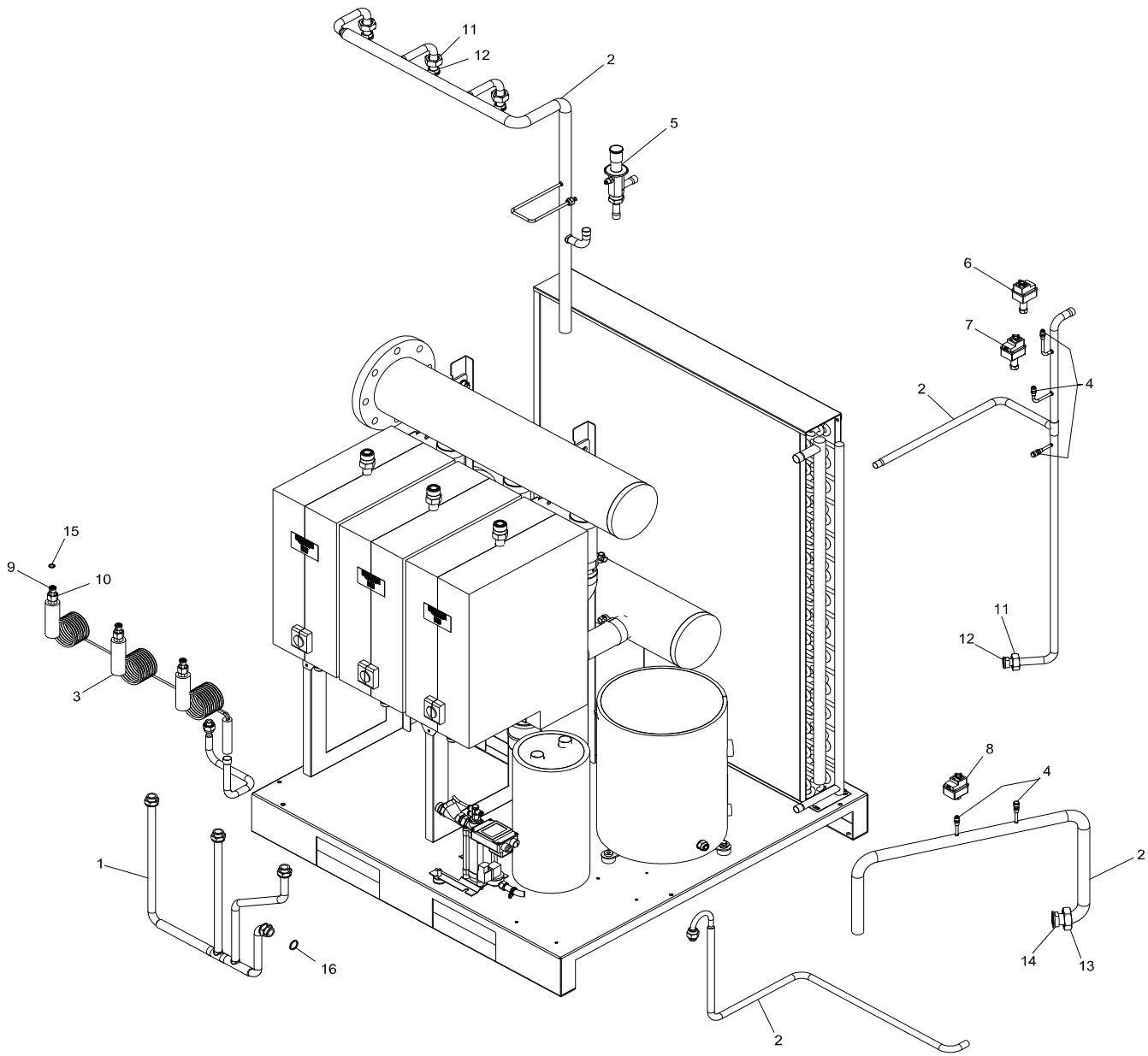


TAB. 2 (QPNC1600, QPNC1800, QPNC2200, QPNC2500, QPNC3000)

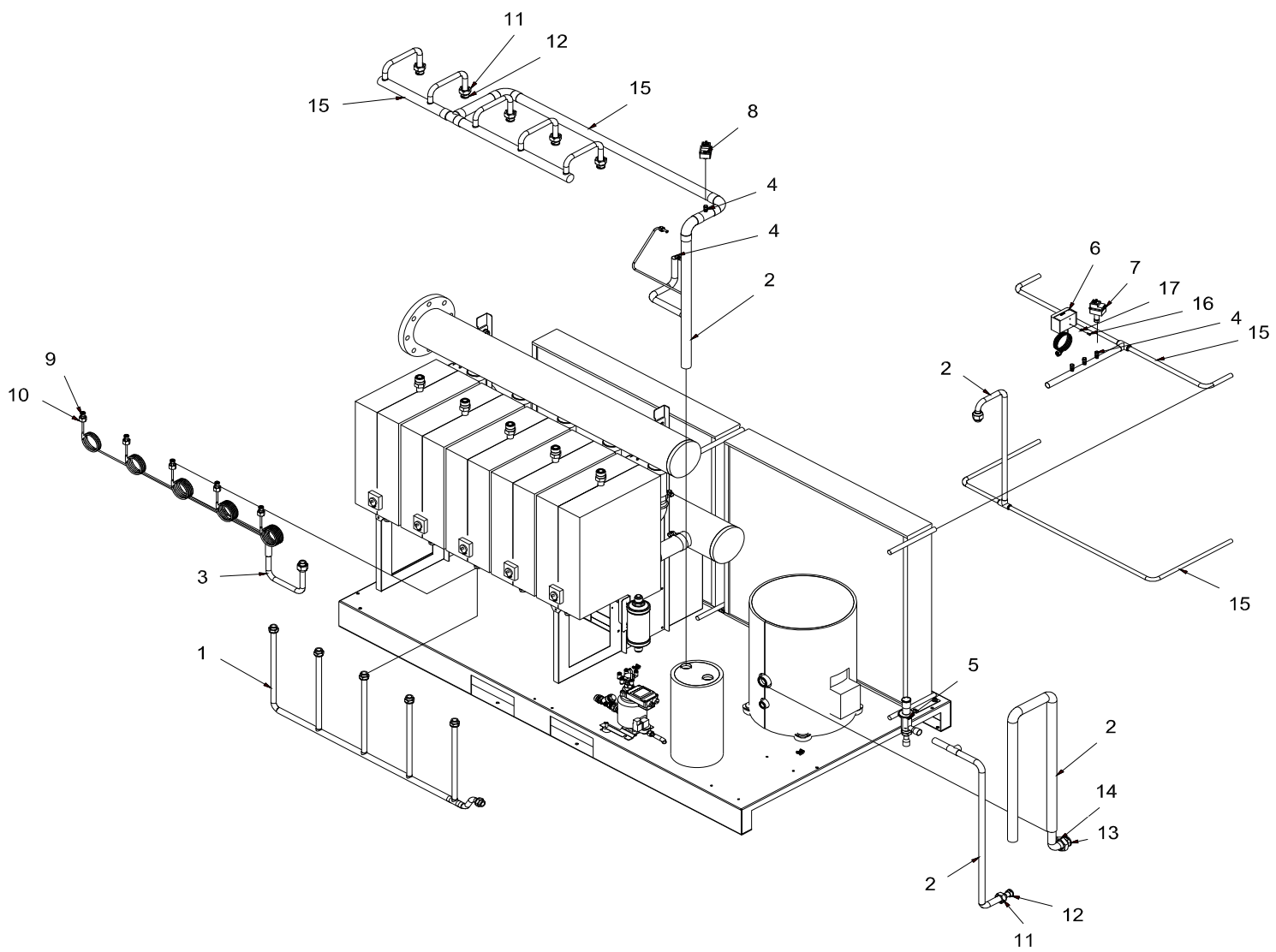


TAB. 3 (QPNC0750, QPNC1000, QPNC1250)





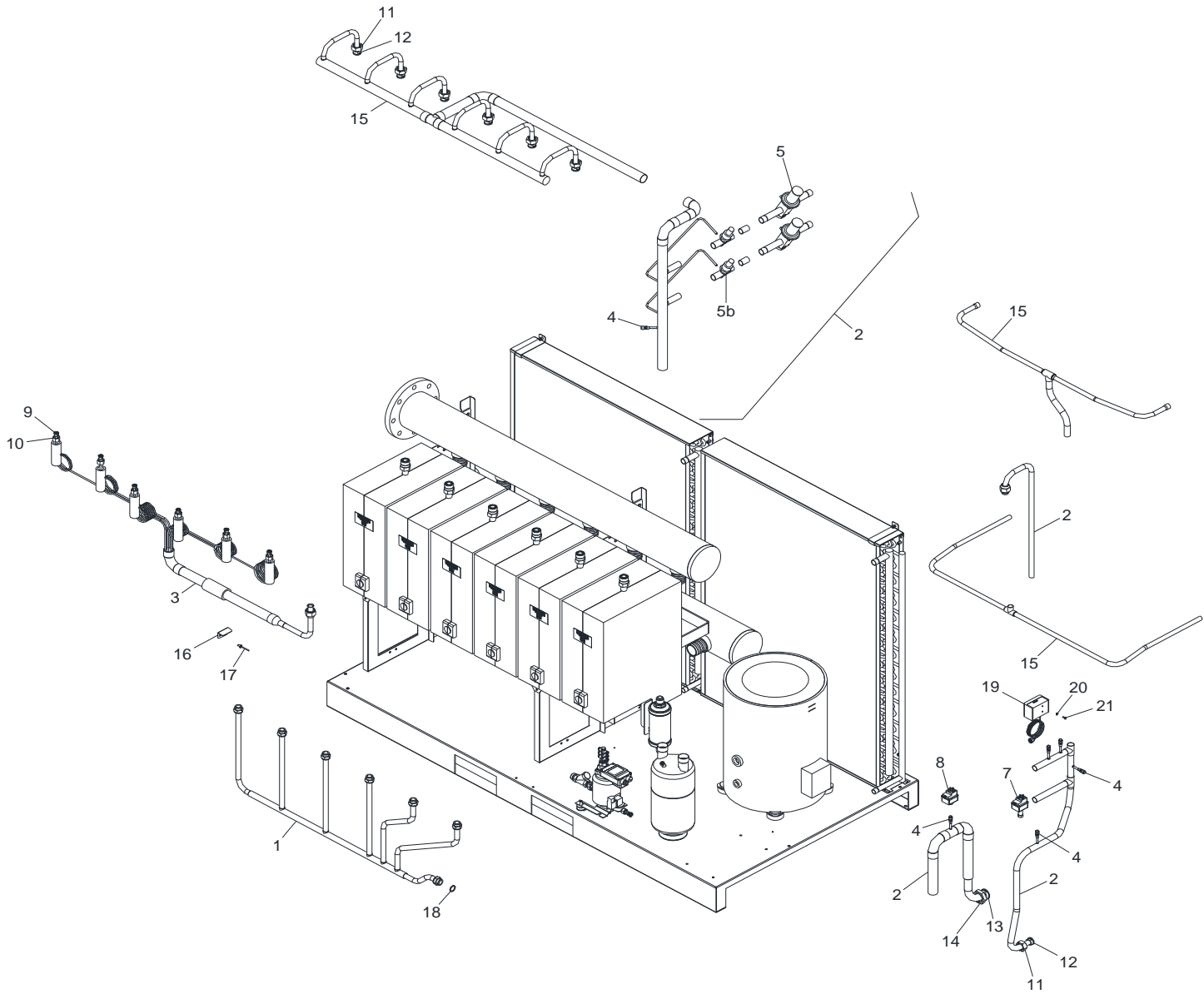
TAB. 5 (QPNC1600, QPNC1800, QPNC2200, QPNC2500)



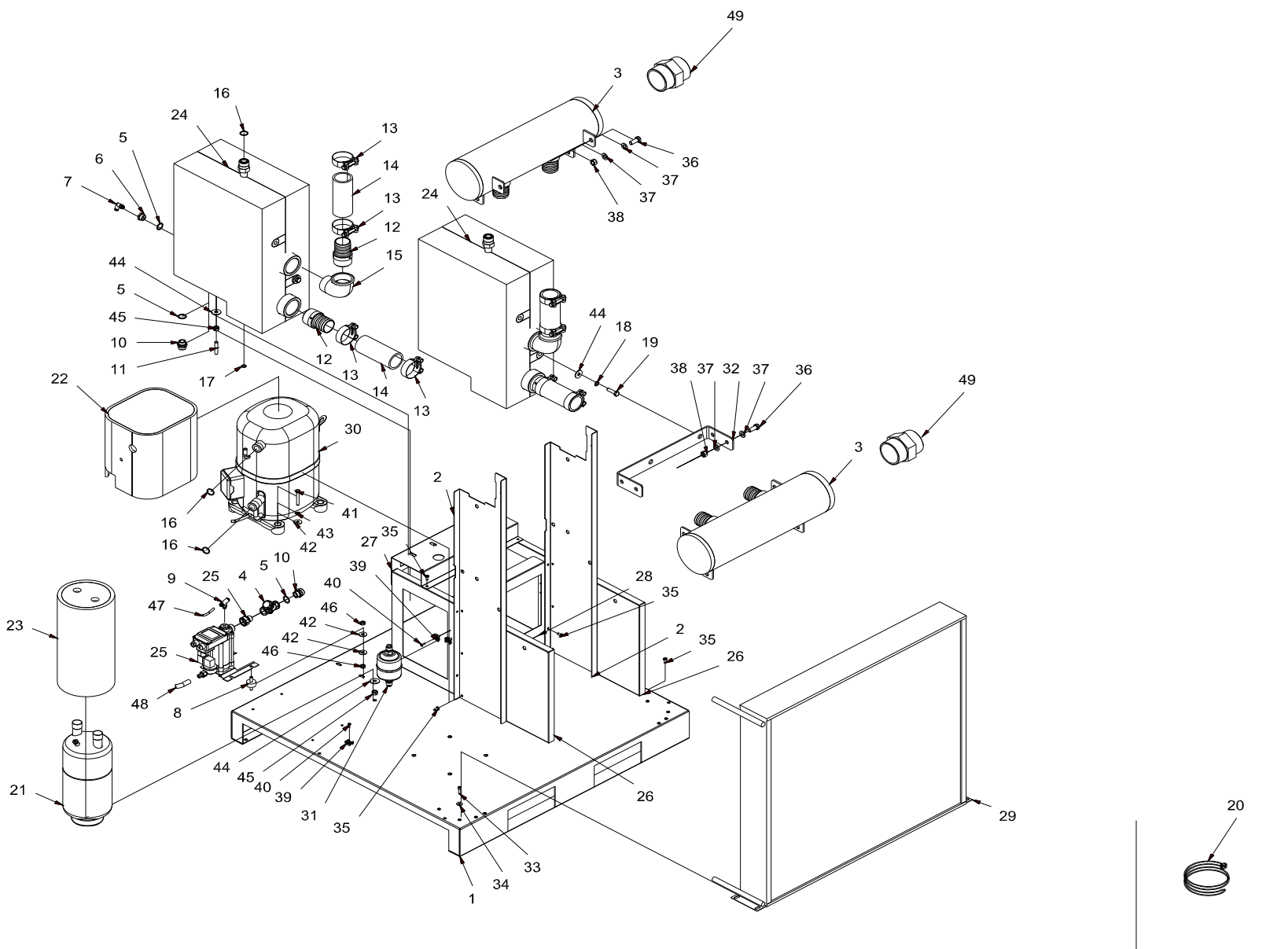
TAB. 5			Q.ty												Air dryer			
			QPNC1600			QPNC1800			QPNC2200			QPNC2500						
Ref. No	Part. num.	Note	4102 0012 12			4102 0012 13				4102 0012 14				4102 0012 15				DESCRIPTION
1	2202 8391 00		1			1												DRAIN PIPE
1	2202 8373 00								1					1				DRAIN PIPE
2	2202 8182 80		1			1			1					1				PIPE ASSY DRYER
3	2202 8513 00																	CAPILLARY
3	2202 8512 00																	CAPILLARY
3	2202 8390 00		1			1												CAPILLARY
3	2202 8372 00								1					1				CAPILLARY
4	2202 8516 00		5			5			5					5				CHECK VALVE
5	2202 8185 02	(A)	1			1			1					1				HOT GAS B-P VALVE (1st Serie)
5	2202 9328 01	(1)	1			1			1					1				HOT GAS B-P VALVE (2nd Serie)
6	1089 9139 06		1			1			1					1				FAN SWITCH
7	2202 8155 01		1			1			1					1				HIGH PRESSURE SWITCH
8	2202 8186 02		1			1			1					1				LOW PRESSURE SWITCH
9	2202 7466 10		4			4			5					5				SLEEVE
10	2202 7466 02		4			4			5					5				NUT FOR ROTALOCK
11	2202 7466 07		5			5			6					6				NUT FOR ROTALOCK
12	2202 7466 08		5			5			6					6				SLEEVE
13	2202 7466 08		1			1			1					1				SLEEVE
14	2202 7466 07		1			1			1					1				NUT FOR ROTALOCK
15	2202 8221 80		1			1												PIPE ASSY DRYER
15	2202 8381 80								1					1				PIPE ASSY DRYER
16	0160 6039 00		2			2			2					2				SCREW
17	0301 2315 00		2			2			2					2				WASHER

Note A : If Ref. 5 are replaced just for the 1st serie, supply KIT Cod. 2200902533

Note 1: From following serial number:, 1) CAI 366220



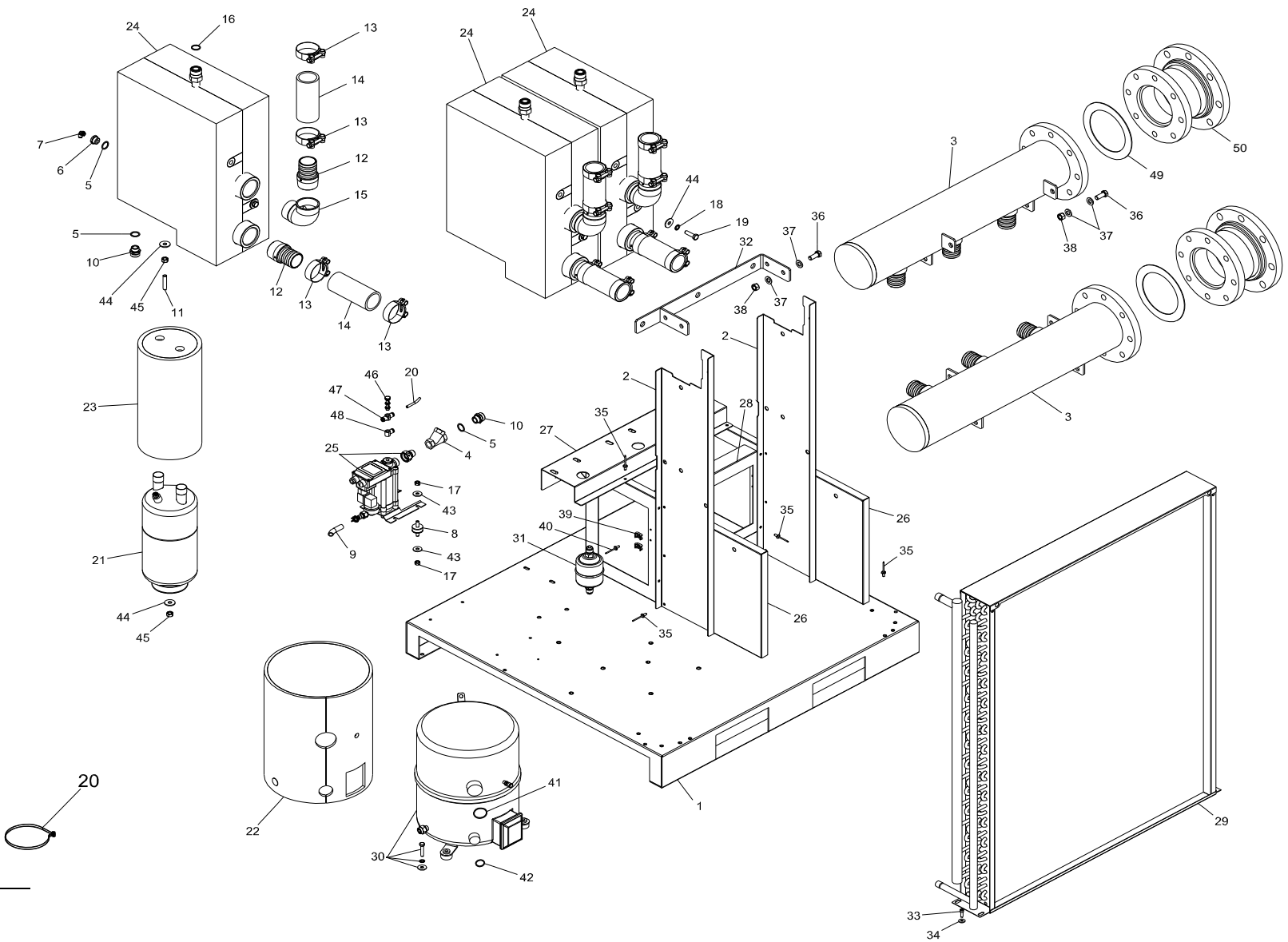
TAB. 7 (QPNC0750, QPNC1000, QPNC1250)



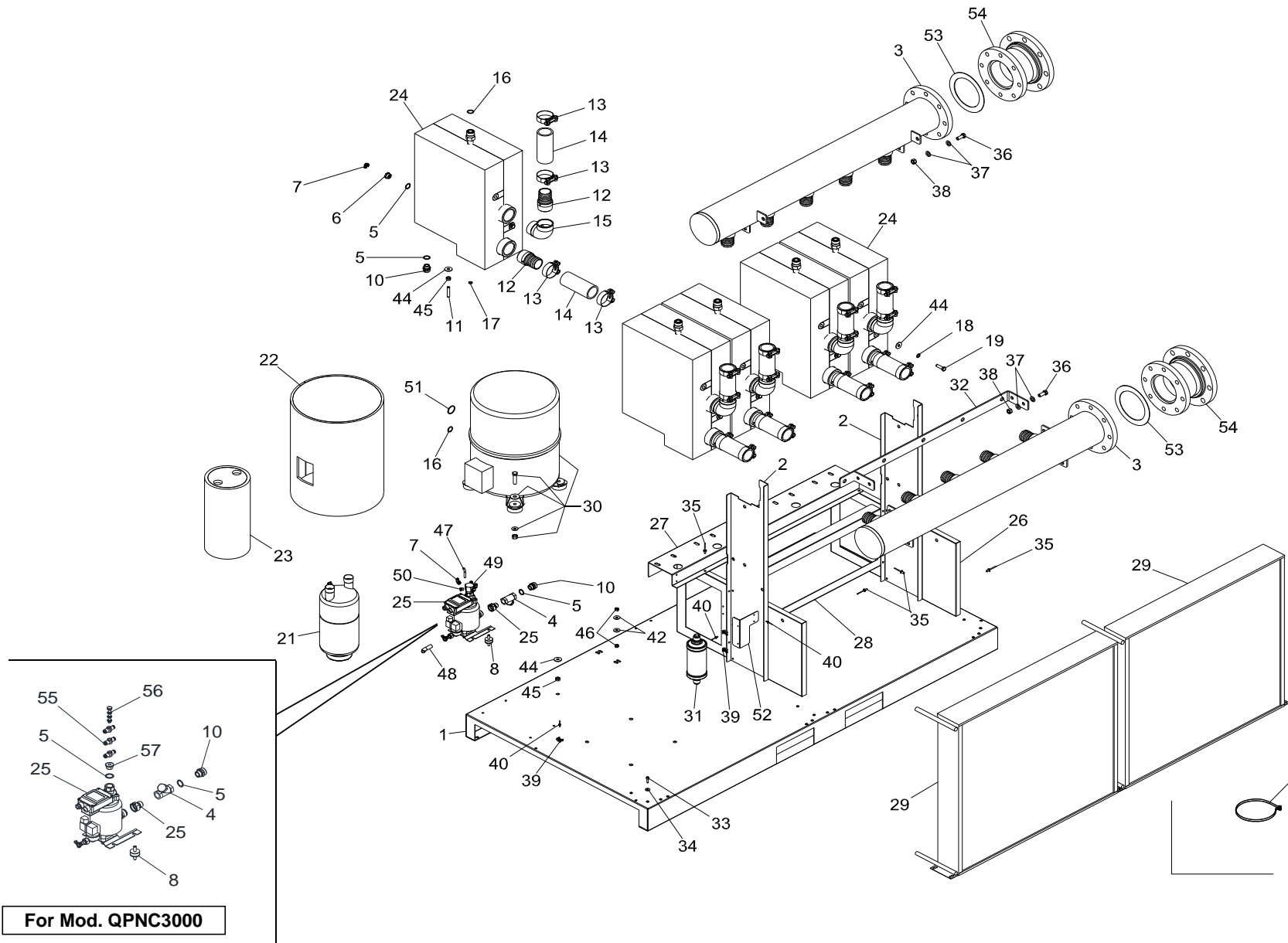
TAB. 7			Q.ty									Air dryer	
			QPNC0750			QPNC1000			QPNC1250				
Ref. No	Part. num.	Note	4102 0012 09			4102 0012 10				4102 0012 11			DESCRIPTION
1	2202 8118 01		1			1				1			CRANKCASE
2	2202 8167 00		2			2				2			STIRRUP
3	2202 8029 01		2			2				2			MANIFOLD
4	0803 5010 08		1			1				1			STRAINER
5	0653 1124 00		3			3				3			GASKET
6	2202 8188 00		2			2				2			REDUCER
7	9090 1518 00		2			2				2			COUPLING
8	2200 6625 60		2			2				2			DAMPER
9	9090 1527 00		1			1				1			TEE
10	2202 8062 00		3			3				3			ADAPTOR
11	0196 1553 18		4			4				4			SCREW
12	2202 7721 01		4			4				4			FITTING
13	2202 8175 00		8			8				8			HOSE CLAMP
14	2202 8174 00		4			4				4			HOSE AIR
15	0560 1310 03		2			2				2			ELBOW
16	2200 6336 11		4			4				4			O-RING FOR ROTALOCK
17	2202 7425 01		2			2				2			O-RING FOR ROTALOCK
18	0333 4232 00		2			2				2			WASHER
19	0147 1364 03		2			2				2			SCREW
20	0348 0101 13		7			7				7			CABLE TIE
21	2202 8434 00		1			1				1			LIQUID SEPARATOR
22	2202 8458 00		1			1							INSULATION COMPRESSOR
22	2202 8461 00									1			INSULATION COMPRESSOR
23	2202 8181 00		1			1				1			INSULATION ASS. PIPE
24	2202 7985 82		2										HEAT EXCHANGER ASSY
24	2202 7403 82					2				2			HEAT EXCHANGER ASSY
25	2202 8159 06		1			1				1			ELECTRIC DRAIN
26	2202 8165 00		2			2				2			STIRRUP
27	2202 8171 00		1			1				1			STIRRUP
28	2202 8160 00		2			2				2			STIRRUP
29	2202 7895 01		1										CONDENSER
29	2202 7895 02					1							CONDENSER
29	2202 7895 02									1			CONDENSER
30	2202 8046 01		1										REFRIG. COMPRESSOR
30	2202 8046 02					1							REFRIG. COMPRESSOR
30	2202 8046 03									1			REFRIG. COMPRESSOR
31	2202 8184 01		1			1				1			FILTER DRYER
32	2202 8399 00		1			1				1			STIRRUP
33	0211 1247 03		4			4				4			SCREW
34	0300 0274 64		4			4				4			WASHER
35	0129 3270 38		32			32				32			BLIND RIVET
36	0147 1401 03		12			12				12			SCREW
37	0301 2358 00		24			24				24			WASHER
38	0266 2112 00		12			12				12			NUT
39	0348 0110 03		2			2				2			ANCHOR

NOTE

TAB. 8 (QPNC1600)



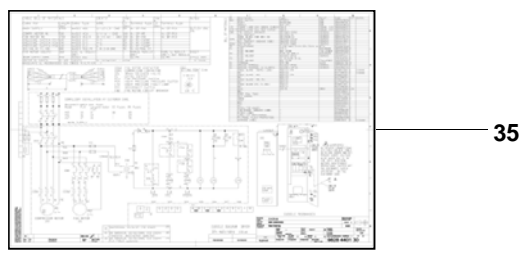
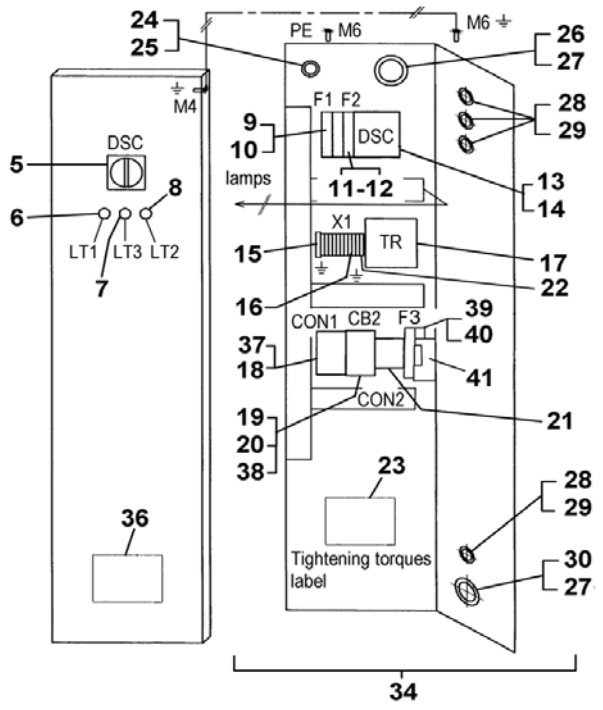
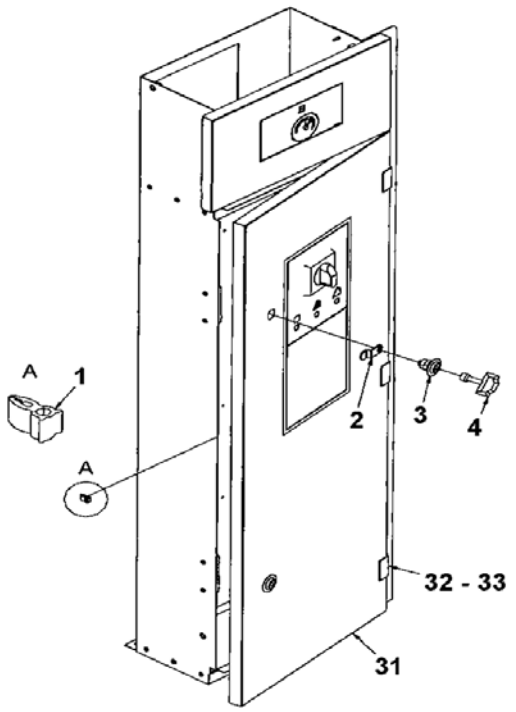
NOTE



TAB. 9 (QPNC1600, QPNC1800, QPNC2200, QPNC2500, QPNC3000)

TAB. 9			Q.ty															Air dryer				
			QPNC1600			QPNC1800			QPNC2200			QPNC2500			QPNC3000							
Ref. No	Part. num.	Note	4102 0012 12			4102 0012 13				4102 0012 14				4102 0012 15				4102 0013 23				DESCRIPTION
40	0129 3270 40		5			5				5				5				5				BLIND RIVET
42	0300 8019 00		4			4				4				4				4				WASHER
44	0300 0274 17		13			13				16				16				18				WASHER
45	0266 2111 00		9			9				11				11				13				NUT
46	0266 2110 00		4			4				4				4				4				NUT
47	0070 6002 48		X			X				X				X				X				PIPE (TO METERS)
48	0070 6002 49		X			X				X				X				X				PIPE (TO METERS)
49	2202 8166 00		1			1				1				1								ADAPTOR
50	0686 3718 25		1			1																PLUG
51	2200 6336 12		1			1				1				1				1				O-RING FOR ROTALOCK
52	2202 8400 00		1			1				1				1				1				STIRRUP
53	0650 1001 00		2			2				2				2				2				GASKET
54	2202 9324 01		2			2				2				2				2				MANIFOLD
55	0583816050																	3				COUPLING
56	0583816047																	1				COUPLING
57	2202818800																	1				REDUCTION

NOTE

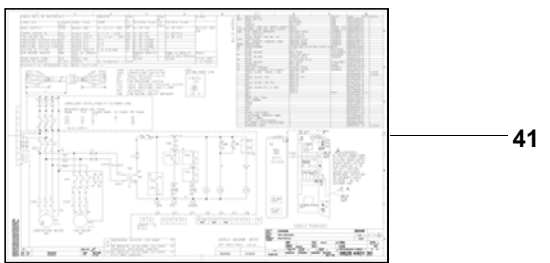
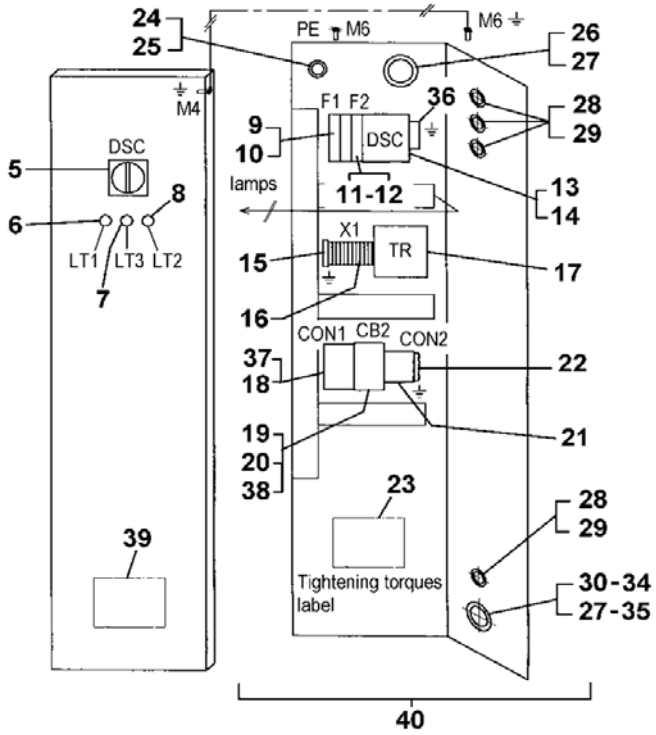
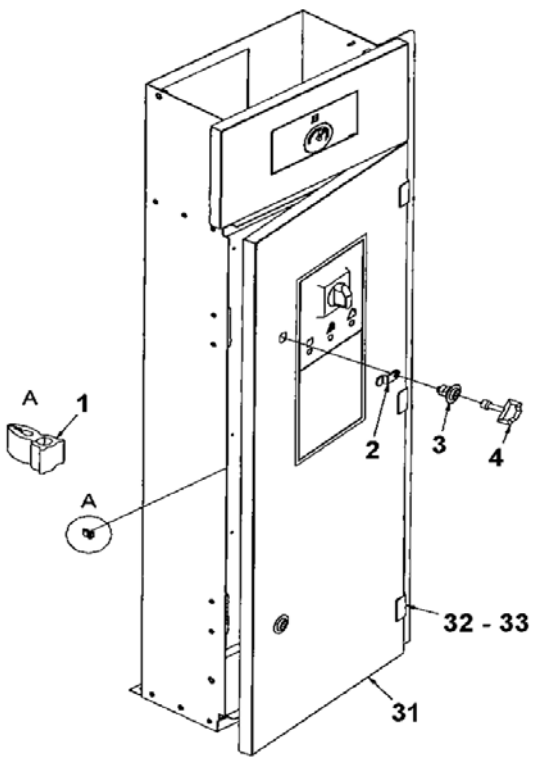


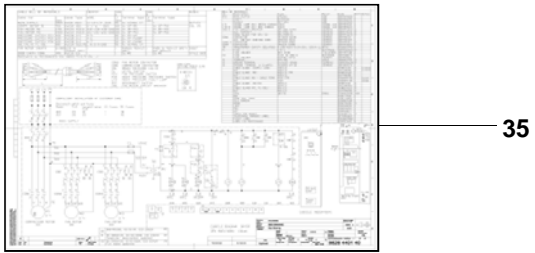
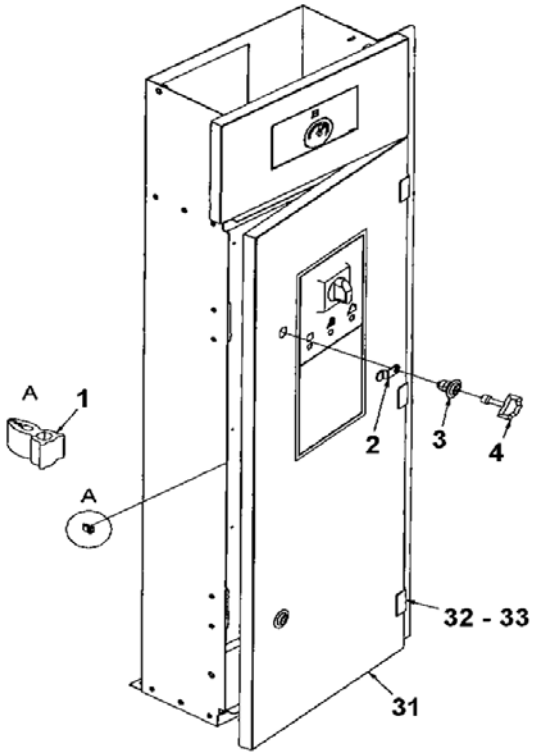
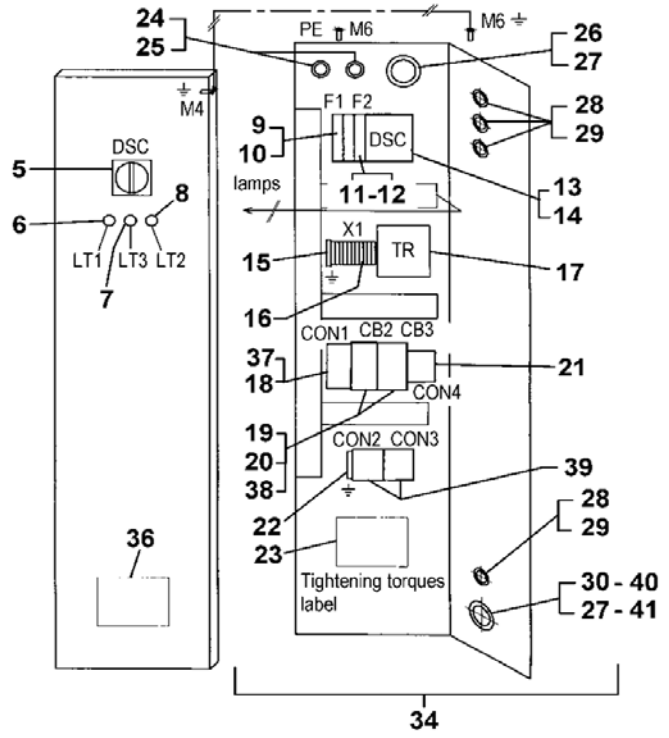
TAB. 10			Q.ty									Electric board control panel	
			QPNC0750			QPNC1000			QPNC1250				
Ref. No	Part. num.	Note	4102 0012 09			4102 0012 10				4102 0012 11			DESCRIPTION
1	2202 8453 00		X			X				X			SEAL (TO METERS)
2	2202 2512 59		2			2				2			PEG
3	2200 5402 34		2			2				2			LOCK
4	2200 5402 77		1			1				1			KEY
5	1089 9498 22	(1)	1			1				1			HANDLE (1st Serie for disconnecter switch mod. OT--E3)
5	1089 9498 51		1			1				1			HANDLE (2nd Serie for disconnecter switch mod. OT--F3)
6	1089 9596 12		1			1				1			SIGNAL LAMP
7	1089 9596 13		1			1				1			SIGNAL LAMP
8	1089 9596 13		1			1				1			SIGNAL LAMP
9	1089 9594 02		1			1				1			FUSE HOLDER
10	1089 9168 48		2			2				2			FUSE
11	1089 0506 16		1			1				1			FUSE HOLDER
12	1089 9168 79		1			1				1			FUSE
13	1089 9498 26	(2)	1			1				1			DISCONNECTOR SWITCH (1st Serie mod. OT--E3)
13	1089 9498 44		1			1				1			DISCONNECTOR SWITCH (2nd Serie mod. OT--F3)
14	1089 9551 90	(3)	1			1				1			SHAFT (1st Serie for disconnecter switch mod. OT--E3)
14	1089 9498 54		1			1				1			SHAFT (2nd Serie for disconnecter switch mod. OT--F3)
15	1089 0506 76		2			2				2			GROUND TERMINAL
16	1088 0037 50		11			11				11			TERMINAL
17	2202 8236 00		1			1				1			TRANSFORMER
18	1089 9415 29		1			1				1			CONTACTOR
19	1089 9416 63		1			1				1			FAN CIRCUIT BREAKER
20	1089 9416 41		1			1				1			AUX. CONTACT
21	1089 9415 17		1			1				1			CONTACTOR
22	1089 0506 28		2			2				2			GROUND TERMINAL
23	1079 9906 09		1			1				1			TIGHTENING TORQUES LABEL
24	0698 5141 21		1			1				1			CABLE GLAND
25	0697 9809 53		1			1				1			NUT
26	0698 5141 28		1			1				1			CABLE GLAND
27	0697 9809 51		2			2				2			NUT
28	0698 5141 23		4			4				4			CABLE GLAND
29	0697 9809 20		4			4				4			NUT
30	0698 5141 28		1			1				1			CABLE GLAND
31	2202 7992 01		1			1				1			DOOR
32	2202 7222 00		3			3				3			HINGE
33	0216 1957 79		3			3				3			SCREW
34	9828 4424 81		1			1				1			CUBICLE DRYER
35	9828 4424 80		1			1				1			SERVICE DIAGRAM DRYER
36	2202 8545 00		1			1				1			FUSES LABEL
37	1089 9415 09		1			1				1			AUX. CONTACT
38	1089 9416 75		1			1				1			CONN. BLOCK
39	1091 9168 36		2			2				2			FUSE
40	1089 9594 04		1			1				1			FUSE HOLDER
41	2202 8842 00		1			1				1			PANEL
	1088 0021 20		1			1				1			CABLE FOR DRAIN SOLENOID VALVE

Note 1 : If Ref. 5 are replaced just for the 1st serie, supply KIT.; Cod. 2200902552

Note 2 : If Ref. 13 are replaced just for the 1st serie, supply KIT.; Cod. 2200902544

Note 3 : If Ref. 14 are replaced just for the 1st serie, supply KIT Cod. 2200902554



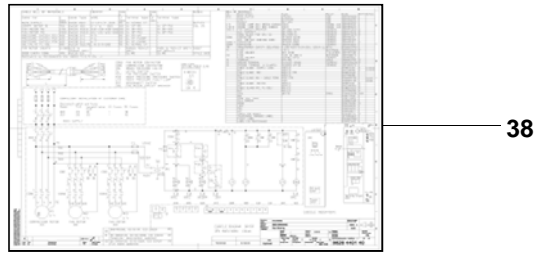
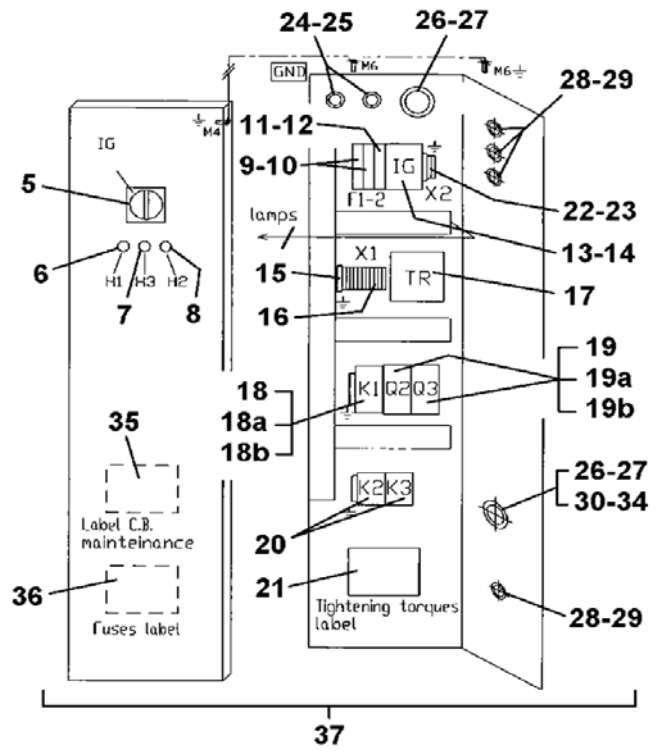
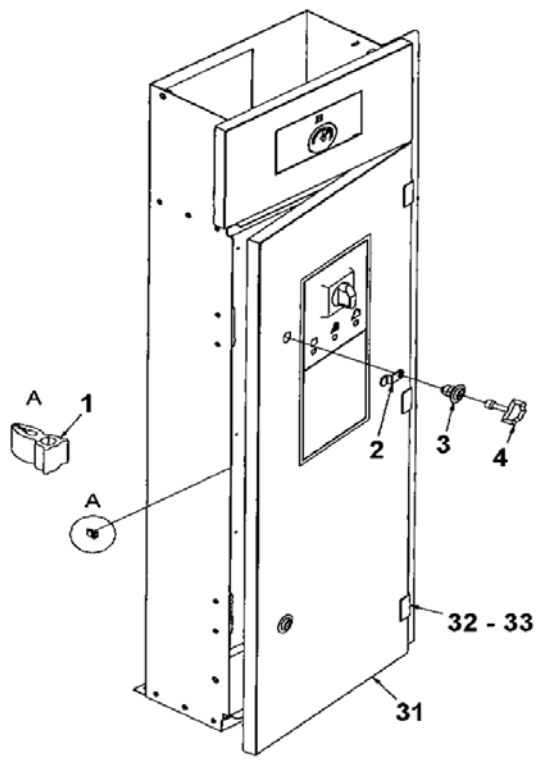


TAB. 12			Q.ty																Electric board control panel
			QPNC1600				QPNC1800				QPNC2200				QPNC2500				
Ref. No	Part. num.	Note	4102 0012 12			4102 0012 13				4102 0012 14				4102 0012 15				DESCRIPTION	
1	2202 8453 00		X			X				X				X				SEAL (TO METERS)	
2	2202 2512 59		2			2				2				2				PEG	
3	2200 5402 34		2			2				2				2				LOCK	
4	2200 5402 77		1			1				1				1				KEY	
5	1089 9498 22	(1)	1			1				1				1				HANDLE (1st Serie for disconnecter switch mod. OT--E3)	
5	1089 9498 51		1			1				1				1				HANDLE (2nd Serie for disconnecter switch mod. OT--F3)	
6	1089 9596 12		1			1				1				1				SIGNAL LAMP	
7	1089 9596 13		1			1				1				1				SIGNAL LAMP	
8	1089 9596 13		1			1				1				1				SIGNAL LAMP	
9	1089 9594 02		1			1				1				1				FUSE HOLDER	
10	1089 9168 48		2			2				2				2				FUSE	
11	1089 0506 16		1			1				1				1				FUSE HOLDER	
12	1089 9168 79		1			1				1				1				FUSE	
13	1089 9498 28	(2)	1			1				1				1				DISCONNECTOR SWITCH (1st Serie mod. OT--E3)	
13	1089 9498 46		1			1				1				1				DISCONNECTOR SWITCH (2nd Serie mod. OT--F3)	
14	1089 9551 90	(3)	1			1				1				1				SHAFT (1st Serie for disconnecter switch mod. OT--E3)	
14	1089 9498 54		1			1				1				1				SHAFT (2nd Serie for disconnecter switch mod. OT--F3)	
15	1089 0506 76		2			2				2				2				GROUND TERMINAL	
16	1088 0037 50		11			11				11				11				TERMINAL	
17	2202 8237 00		1			1				1				1				TRANSFORMER	
18	1089 9415 37		1			1				1				1				CONTACTOR	
19	1089 9416 63		2			2				2				2				FAN CIRCUIT BREAKER	
20	1089 9416 41		2			2				2				2				AUX. CONTACT	
21	1089 9438 15		1			1				1				1				CONTACTOR	
22	1089 0506 28		2			2				2				2				GROUND TERMINAL	
23	1079 9906 09		1			1				1				1				TIGHTENING TORQUES LABEL	
24	0698 5141 21		2			2				2				2				CABLE GLAND	
25	0697 9809 53		2			2				2				2				NUT	
26	0698 5141 20		2			2				2				2				CABLE GLAND	
27	0697 9809 51		2			2				2				2				NUT	
28	0698 5141 23		4			4				4				4				CABLE GLAND	
29	0697 9809 20		4			4				4				4				NUT	
30	0698 5141 28		1			1				1				1				CABLE GLAND	
31	2202 7992 01		1			1				1				1				DOOR	
32	2202 7222 00		3			3				3				3				HINGE	
33	0216 1957 79		3			3				3				3				SCREW	
34	9828 4425 41		1			1				1				1				CUBICLE DRYER	
35	9828 4425 40		1			1				1				1				SERVICE DIAGRAM DRYER	
36	2202 8298 00		1			1				1				1				FUSES LABEL	
37	1089 9415 09		1			1				1				1				AUX. CONTACT	
38	1089 9416 75		2			2				2				2				CONN. BLOCK	
39	1089 9415 17		2			2				2				2				CONTACTOR	
40	2202 8297 23		1			1				1				1				CABLE GLAND FOR REFRIGERANT COMPRESSOR	
41	2202 8297 22		1			1				1				1				NUT FOR REFRIGERANT COMPRESSOR	
	1088 0021 20		1			1				1				1				CABLE FOR DRAIN SOLENOID VALVE	

Note 1 : If Ref. 5 are replaced just for the 1st serie, supply KIT Cod. 2200902552

Note 2 : If Ref. 13 are replaced just for the 1st serie, supply KIT:, Cod. 2200902546

Note 3 : If Ref. 14 are replaced just for the 1st serie, supply KIT:, Cod. 2200902554



NOTE

