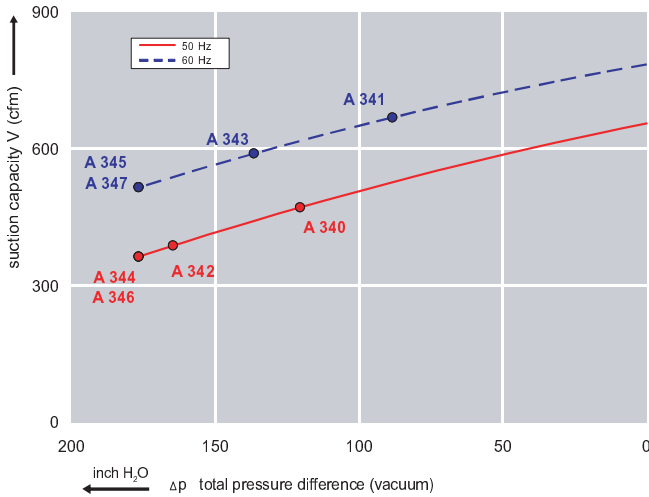


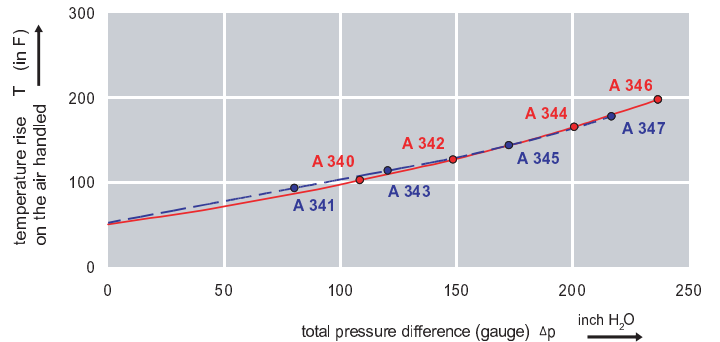
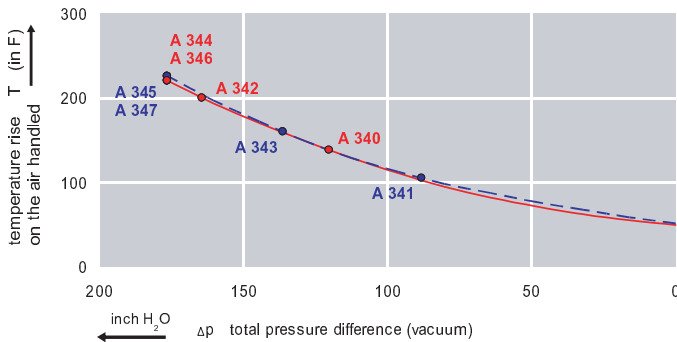
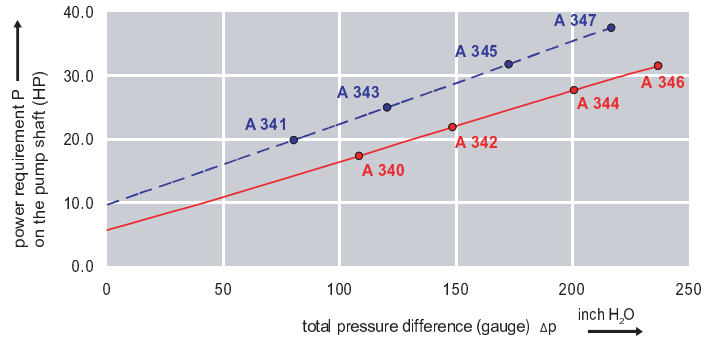
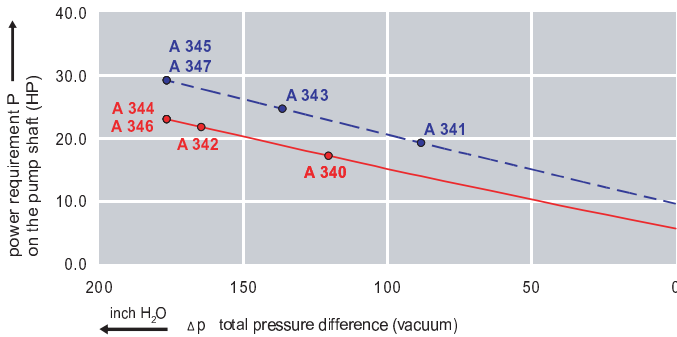
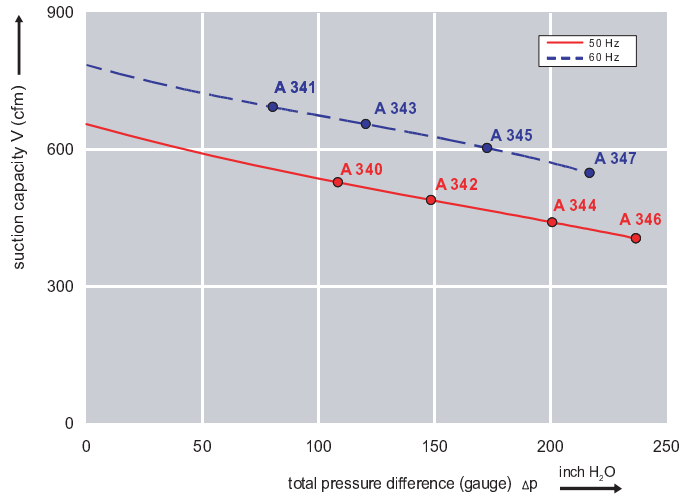
Features:

- Cooler running, outboard bearing provides maintenance-free operation
- Environmentally friendly oil-free technology
- Extremely quiet operation
- All motors are standard TEFC with Class F insulation, UL recognized, CE Compliant
Explosion-Proof motors available
- Custom construction blowers are available
- Rugged die cast aluminum construction

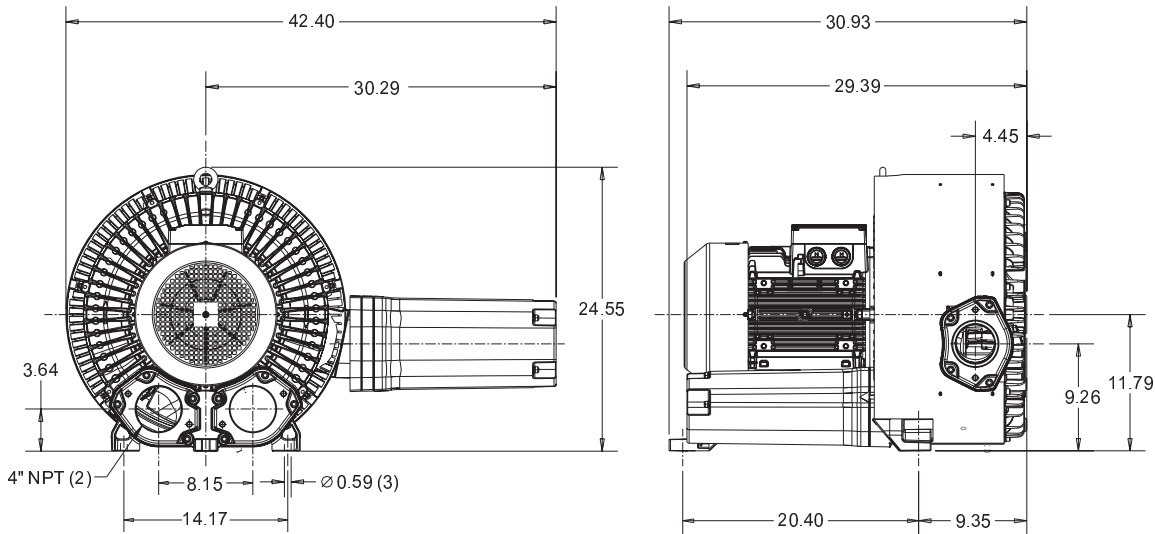
Performance curve for Vacuum pump



Performance curve for Compressor



Dimensions: (inches)



Recommended Accessories:

Relief valve:

VC100Z
(Vacuum)

PC100Z
(Pressure)

Filter:

ATF-400-21138
(Vacuum)

AFS-234-400-10
(Pressure)

Specifications subject to change without notice. Please contact factory for specification updates.

Selection & Ordering Data - Type 3BA1910

Curve No.	Order No.	Fre- quency Hz	Rated power HP	Input voltage		Input current A	Permissible total differential pressure		Sound pressure level dB(A)	Weight lbs	
				V			Vacuum inch H2O	Compressor inch H2O			
3~ 50/60 Hz IP55 insulation material class F											
A 340	3BA1910-7AT16	50	16.75	200D ... 240D	345Y ... 415Y	48.5D	28.0Y	-120	108	74	409
A 341	3BA1910-7AT16	60	19.43	220D ... 250D	415Y ... 460Y	50.0D	29.0Y	-88	80	84	409
A 342	3BA1910-7AT26	50	22.12	200D ... 240D	345Y ... 415Y	60.0D	35.0Y	-165	149	74	428
A 343	3BA1910-7AT26	60	25.47	220D ... 250D	415Y ... 460Y	63.0D	36.5Y	-136	120	84	428
A 344	3BA1910-7AT36	50	26.81	200D ... 240D	345Y ... 415Y	69.0D	40.0Y	-177	201	74	455
A 345	3BA1910-7AT36	60	30.82	220D ... 250D	415Y ... 460Y	72.0D	42.0Y	-177	173	84	455
A 346	3BA1910-7AT46	50	33.51	200D ... 240D	345Y ... 415Y	90.0D	52.0Y	-177	237	74	500
A 347	3BA1910-7AT46	60	38.87	220D ... 250D	415Y ... 460Y	90.0D	52.0Y	-177	217	84	500

Suitable for 208 Volt Operation

All curves are rated at 14.7 psia and 68°F ambient conditions and are reported in SCFM referenced to 68°F and 14.696 psia sea level conditions. Curve values are nominal, actual performance may vary by up to 10% of the values indicated. For inlet temperatures above approximately 80°F or for handling gases other than air, please contact your Airtech sales representative for assistance.