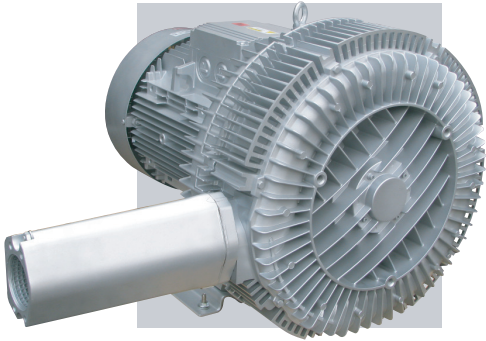
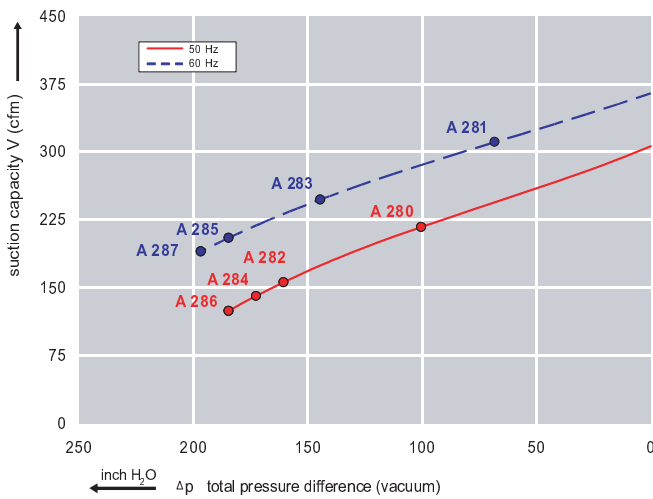


Features:

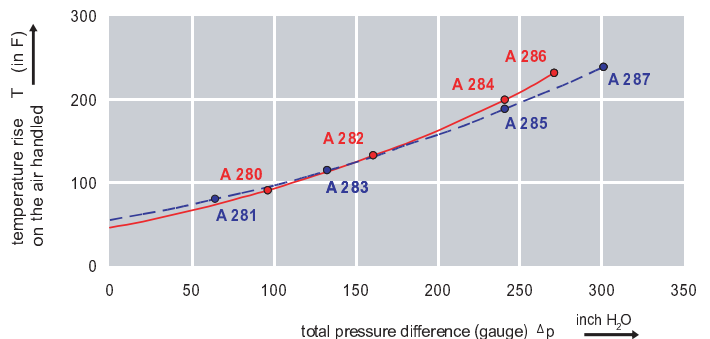
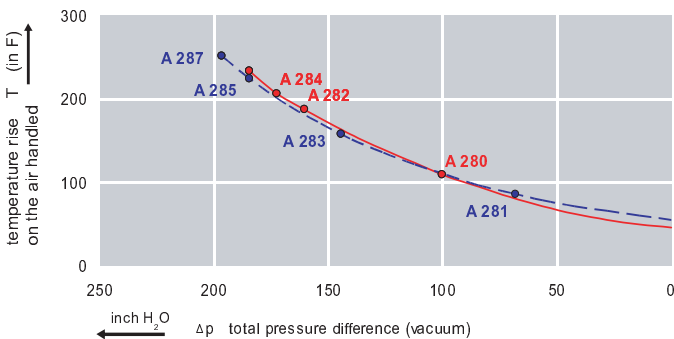
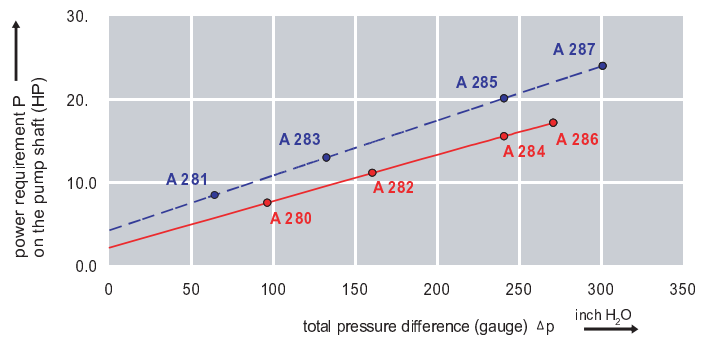
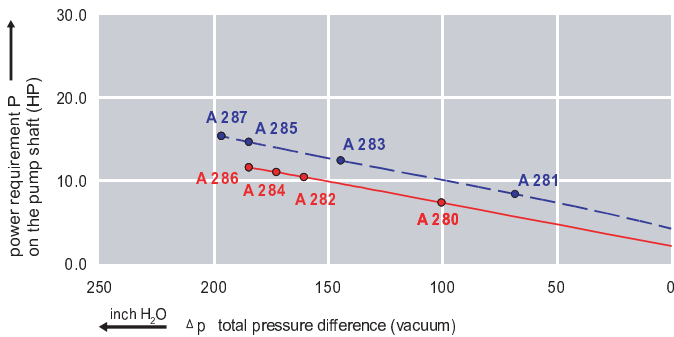
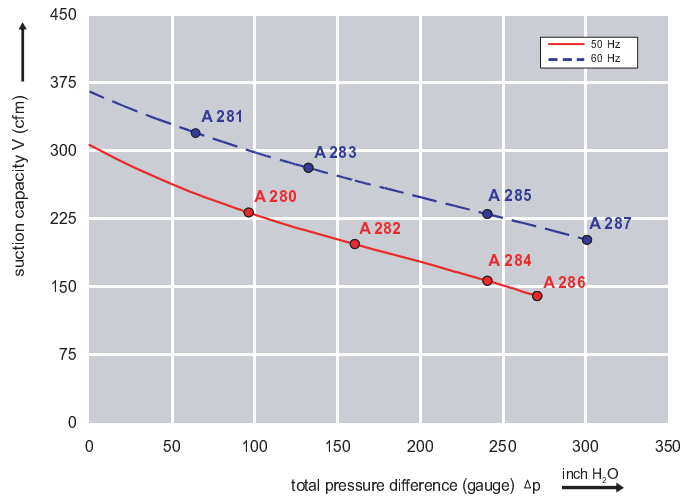


- Cooler running, outboard bearing provides maintenance-free operation
- Environmentally friendly oil-free technology
- Extremely quiet operation
- All motors are standard TEFC with Class F insulation, UL recognized, CE Compliant
Explosion-Proof motors available
- Custom construction blowers are available
- Rugged die cast aluminum construction

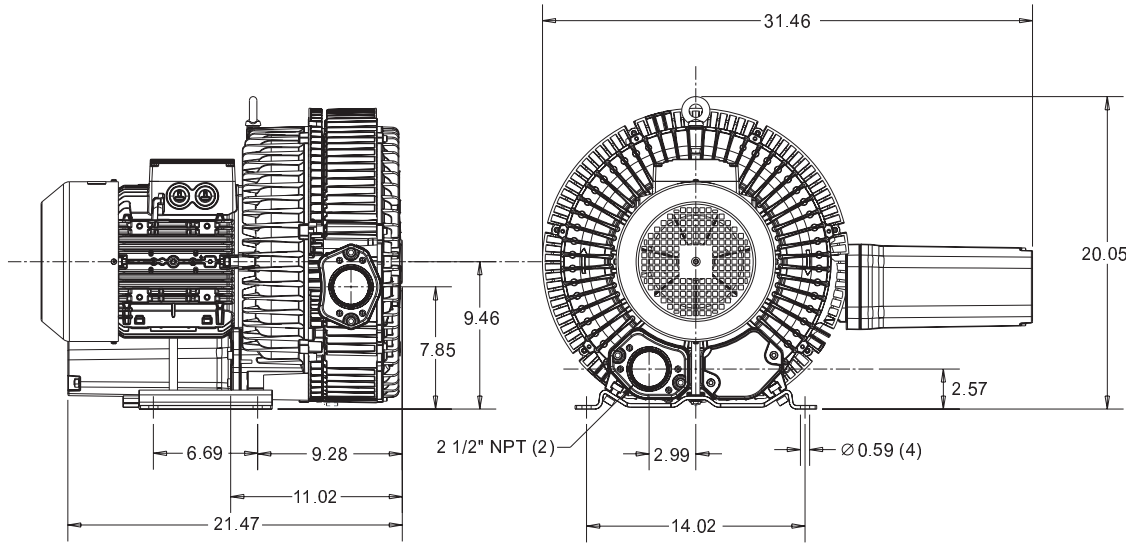
Performance curve for Vacuum pump



Performance curve for Compressor



Dimensions: (inches)



Recommended Accessories:

Relief valve:

VC88Z or VC81Z
(Vacuum)

PC88Z or PC81Z
(Pressure)

Filter:

ATF-250-15124/1
(Vacuum)

AFS-230-250-10
(Pressure)

Specifications subject to change without notice. Please contact factory for specification updates.

Selection & Ordering Data - Type 3BA1810

Curve No.	Order No.	Fre- quency Hz	Rated power HP	Input voltage		Input current A	Permissible total differential pressure		Sound pressure level dB(A)	Weight lbs	
				V			Vacuum inch H2O	Compressor inch H2O			
3~ 50/60 Hz IP55 insulation material class F1)											
A 280	3BA1810-7AT16	50	7.37	200D ... 240D	345Y ... 415Y	23.0D	13.3Y	-100	96	74	250
A 281	3BA1810-7AT16	60	8.44	220D ... 250D	415Y ... 460Y	20.0D	11.2Y	-68	64	78	250
A 282	3BA1810-7AT26	50	10.05	200D ... 240D	345Y ... 415Y	29.0D	16.7Y	-161	161	74	260
A 283	3BA1810-7AT26	60	11.52	220D ... 250D	415Y ... 460Y	27.5D	15.0Y	-145	132	78	260
A 284	3BA1810-7AT36	50	14.74	200D ... 240D	345Y ... 415Y	48.5D	28.0Y	-173	241	74	316
A 285	3BA1810-7AT36	60	16.88	220D ... 250D	415Y ... 460Y	50.2D	29.0Y	-185	241	78	316
A 286	3BA1810-7AT46	50	20.11	200D ... 240D	345Y ... 415Y	56.5D	32.5Y	-185	271	74	341
A 287	3BA1810-7AT46	60	23.18	220D ... 250D	415Y ... 460Y	60.0D	34.5Y	-197	301	78	341

Suitable for 208 Volt Operation

All curves are rated at 14.7 psia and 68°F ambient conditions and are reported in SCFM referenced to 68°F and 14.696 psia sea level conditions. Curve values are nominal, actual performance may vary by up to 10% of the values indicated. For inlet temperatures above approximately 80 °F or for handling gases other than air, please contact your Airtech sales representative for assistance.