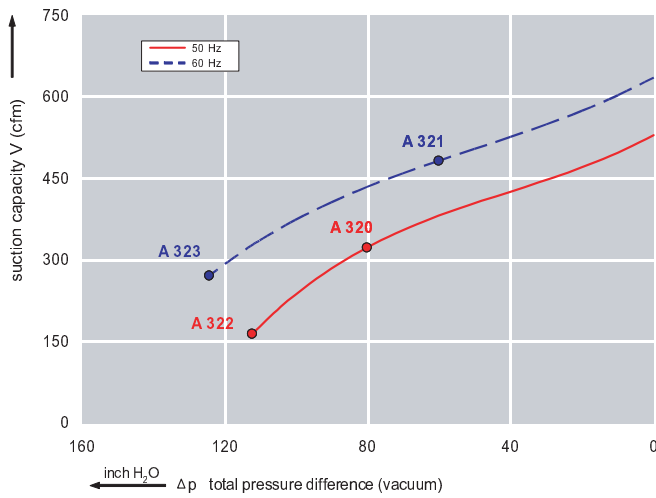


Features:

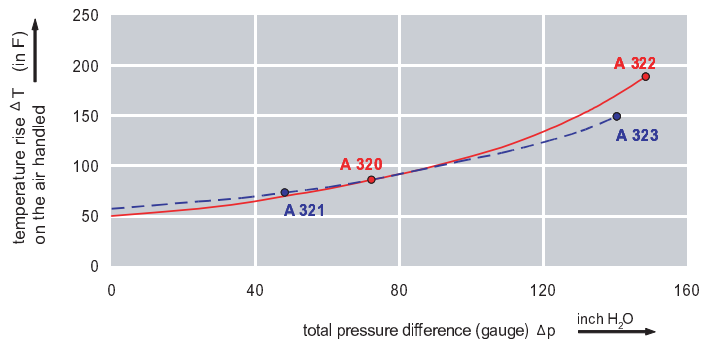
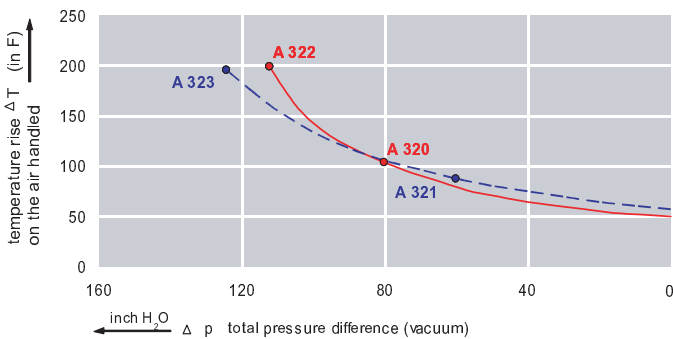
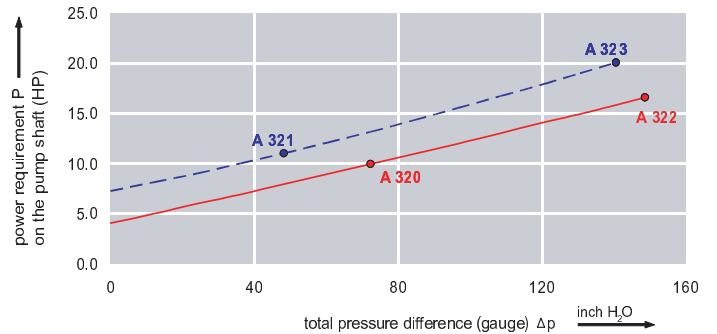
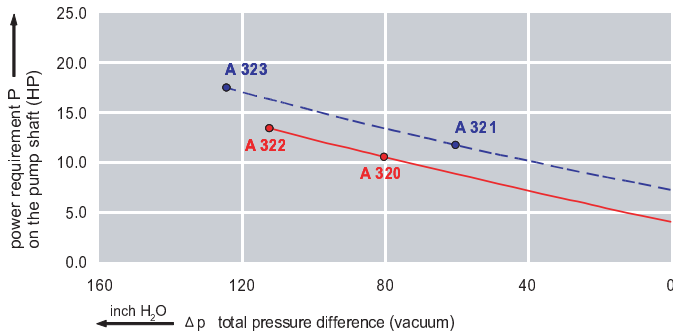
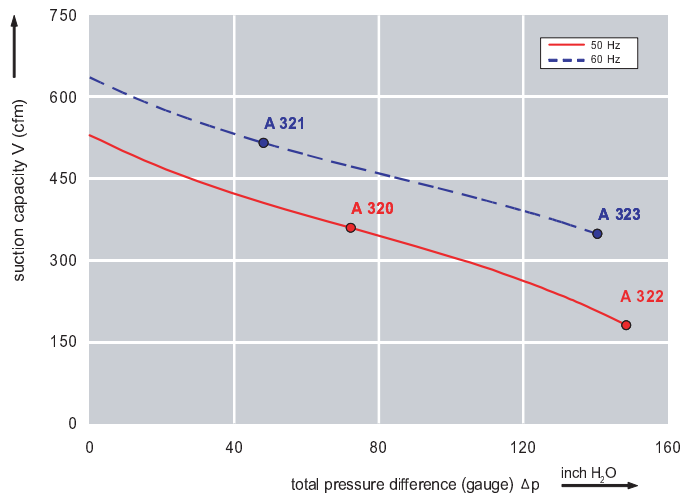


- Cooler running, outboard bearing provides maintenance-free operation
- Environmentally friendly oil-free technology
- Extremely quiet operation
- All motors are standard TEFC with Class F insulation, UL recognized, CE Compliant
Explosion-Proof motors available
- Custom construction blowers are available
- Rugged die cast aluminum construction

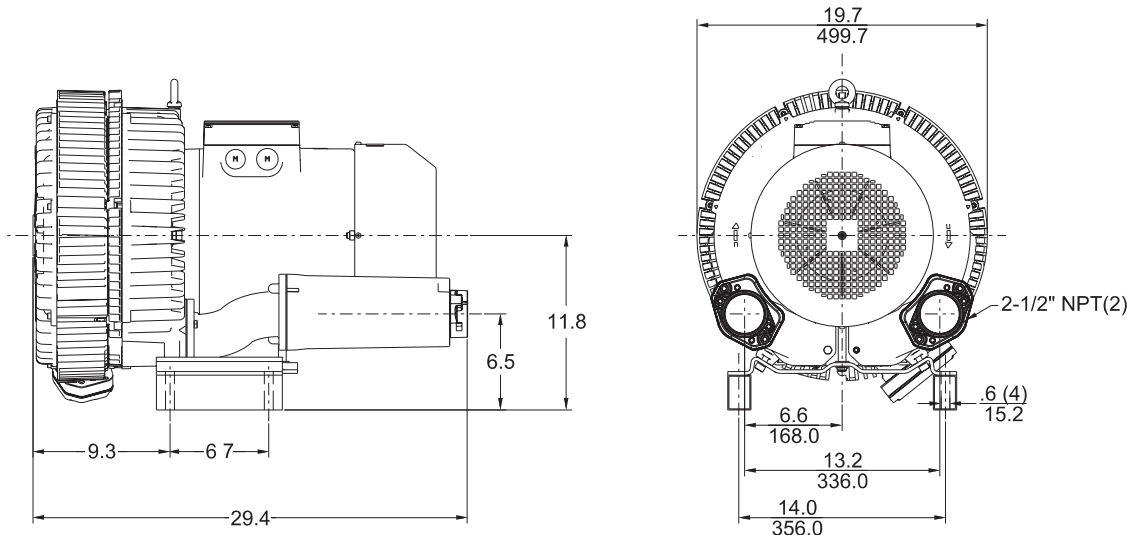
Performance curve for Vacuum pump



Performance curve for Compressor



Dimensions: (inches)



**Recommended
Accessories:**

Relief valve:

VC91Z or VC88Z
(Vacuum)

PC91Z or PC88Z
(Pressure)

Filter:

ATF-300-21138
(Vacuum)

AFS-230-300-10
(Pressure)

Specifications subject to change without notice. Please contact factory for specification updates.

Selection & Ordering Data - Type 3BA1840

| Curve No. | Order No. | Fre- quency Hz | Rated power HP | Input voltage | | Input current A | Permissible total differential pressure ²⁾ | | Sound pressure level ³⁾ dB(A) | Weight ca. lbs | |
|---|---------------|----------------------|----------------------|---------------|---------------|-----------------------|--|------------------------|---|----------------------|-----|
| | | | | V | | | Vacuum inch H2O | Compressor inch H2O | | | |
| 3~ 50/60 Hz IP55 insulation material class F | | | | | | | | | | | |
| A 320 | 3BA1840-7AT26 | 50 | 10.05 | 200D ... 240D | 345Y ... 415Y | 29.0D | 16.7Y | -80 | 72 | 74 | 352 |
| A 321 | 3BA1840-7AT26 | 60 | 11.52 | 220D ... 250D | 415Y ... 460Y | 27.5D | 15.0Y | -60 | 48 | 78 | 352 |
| A 322 | 3BA1840-7AT36 | 50 | 14.74 | 200D ... 240D | 345Y ... 415Y | 48.5D | 28.0Y | -112 | 149 | 74 | 441 |
| A 323 | 3BA1840-7AT36 | 60 | 16.98 | 220D ... 250D | 415Y ... 460Y | 50.2D | 29.0Y | -124 | 141 | 78 | 441 |

Suitable for 208 Volt Operation

All curves are rated at 14.7 psia and 68° F ambient conditions and are reported in SCFM referenced to 68° F and 14.696 psia sea level conditions. Curve values are nominal, actual performance may vary by up to 10% of the values indicated. For inlet temperatures above approximately 80 °F or for handling gases other than air, please contact your Airtech sales representative for assistance.