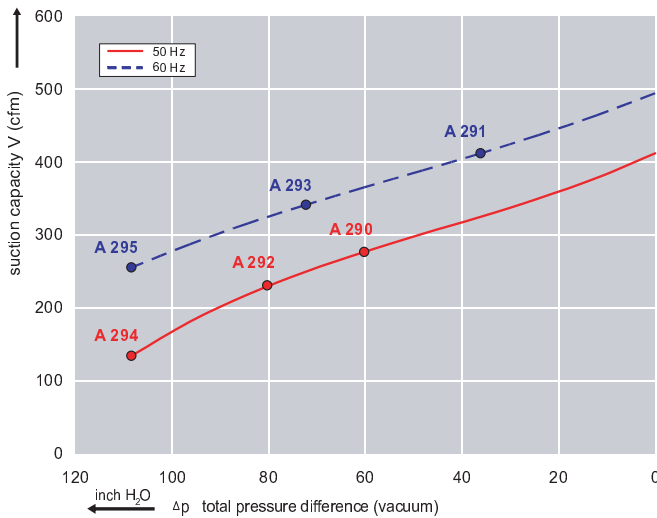




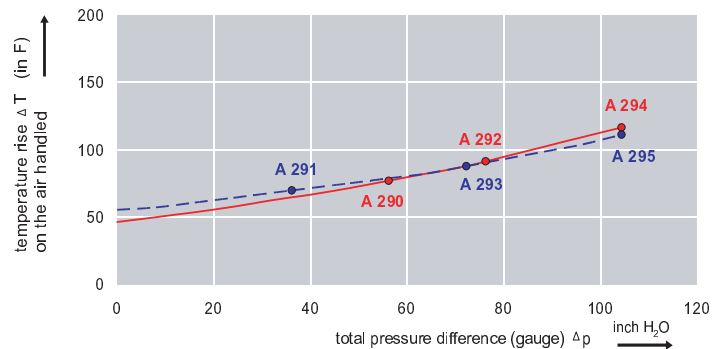
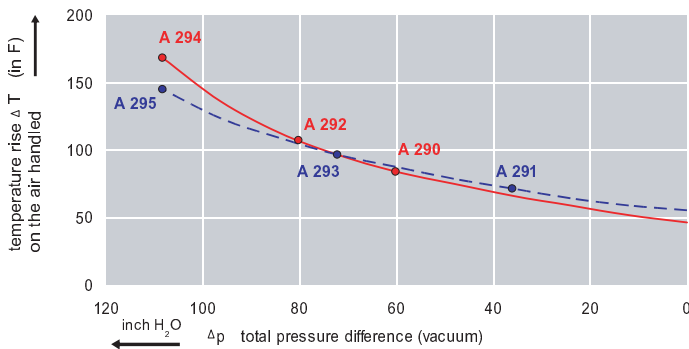
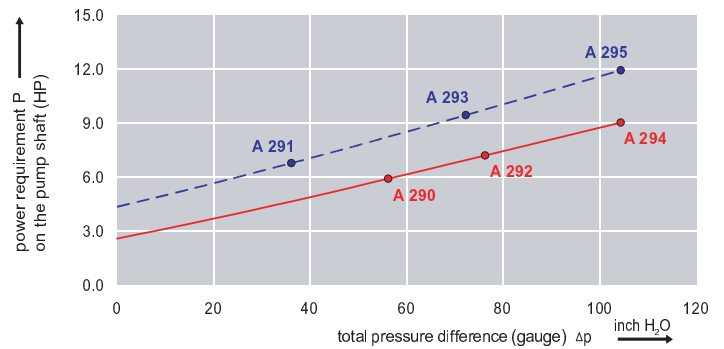
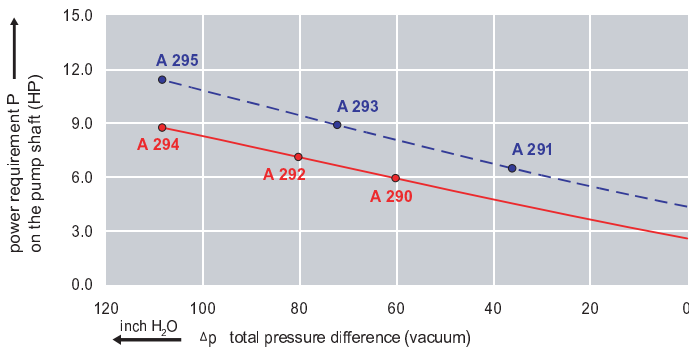
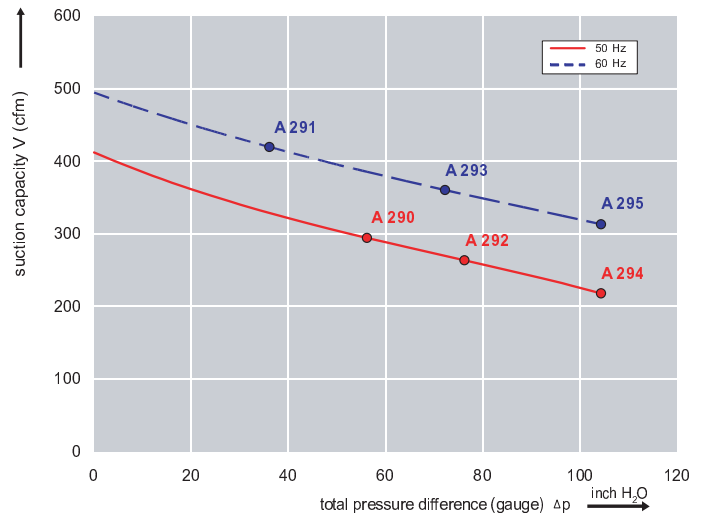
### Features:

- Cooler running, outboard bearing provides maintenance-free operation
- Environmentally friendly oil-free technology
- Extremely quiet operation
- All motors are standard TEFC with Class F insulation, UL recognized, CE Compliant  
*Explosion-Proof motors available*
- Custom construction blowers are available
- Rugged die cast aluminum construction

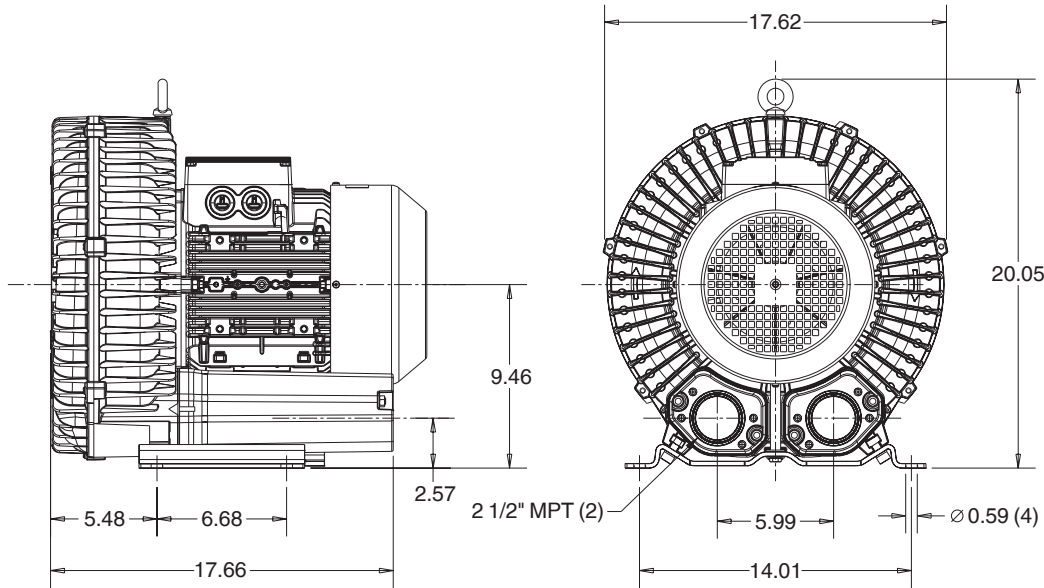
Performance curve for Vacuum pump



Performance curve for Compressor



### Dimensions: (inches)



### Recommended Accessories:

#### Relief valve:

VC91Z  
(Vacuum)

PC91Z  
(Pressure)

#### Filter:

ATF-300-21138  
(Vacuum)

AFS-230-300-10  
(Pressure)

Specifications subject to change without notice. Please contact factory for specification updates.

### Selection & Ordering Data - Type 3BA1830

Curve No.	Order No.	Fre- quency  Hz	Rated power  HP	Input voltage		Input current  A	Permissible total differential pressure		Sound pressure level  dB(A)	Weight  lbs	
				V			Vacuum inch H2O	Compressor inch H2O			
<b>3~ 50/60 Hz IP55 insulation material class F</b>											
A 290	3BA1830-7AT06	50	5.36	200D ... 240D	345Y ... 415Y	15.6D	9.0Y	-60	56	70	139
A 291	3BA1830-7AT06	60	6.16	220D ... 250D	415Y ... 460Y	15.2D	8.5Y	-36	36	74	139
A 292	3BA1830-7AT16	50	7.37	200D ... 240D	345Y ... 415Y	23.0D	13.3Y	-80	76	70	154
A 293	3BA1830-7AT16	60	8.44	220D ... 250D	415Y ... 460Y	20.0D	11.2Y	-72	72	74	154
A 294	3BA1830-7AT26	50	10.05	200D ... 240D	345Y ... 415Y	29.0D	16.7Y	-108	104	70	160
A 295	3BA1830-7AT26	60	11.52	220D ... 250D	415Y ... 460Y	27.5D	15.0Y	-108	104	74	160
<b>3~ 50/60 Hz IP55 insulation material class F</b>											
A 290	3BA1830-7AT05	50	5.36	500D		7.5D		-60	56	70	139
A 291	3BA1830-7AT05	60	6.17	575D		7.6D		-36	36	74	139
A 292	3BA1830-7AT15	50	7.37	500D		10.5D		-80	76	70	154
A 293	3BA1830-7AT15	60	8.45	575D		10.4D		-72	72	74	154
A 294	3BA1830-7AT25	50	10.05	500D		13.0D		-108	104	70	160
A 295	3BA1830-7AT25	60	11.53	575D		13.6D		-108	104	74	160

Suitable for 208 Volt Operation

All curves are rated at 14.7 psia and 68°F ambient conditions and are reported in SCFM referenced to 68°F and 14.696 psia sea level conditions. Curve values are nominal, actual performance may vary by up to 10% of the values indicated. For inlet temperatures above approximately 80 °F or for handling gases other than air, please contact your Airtech sales representative for assistance.