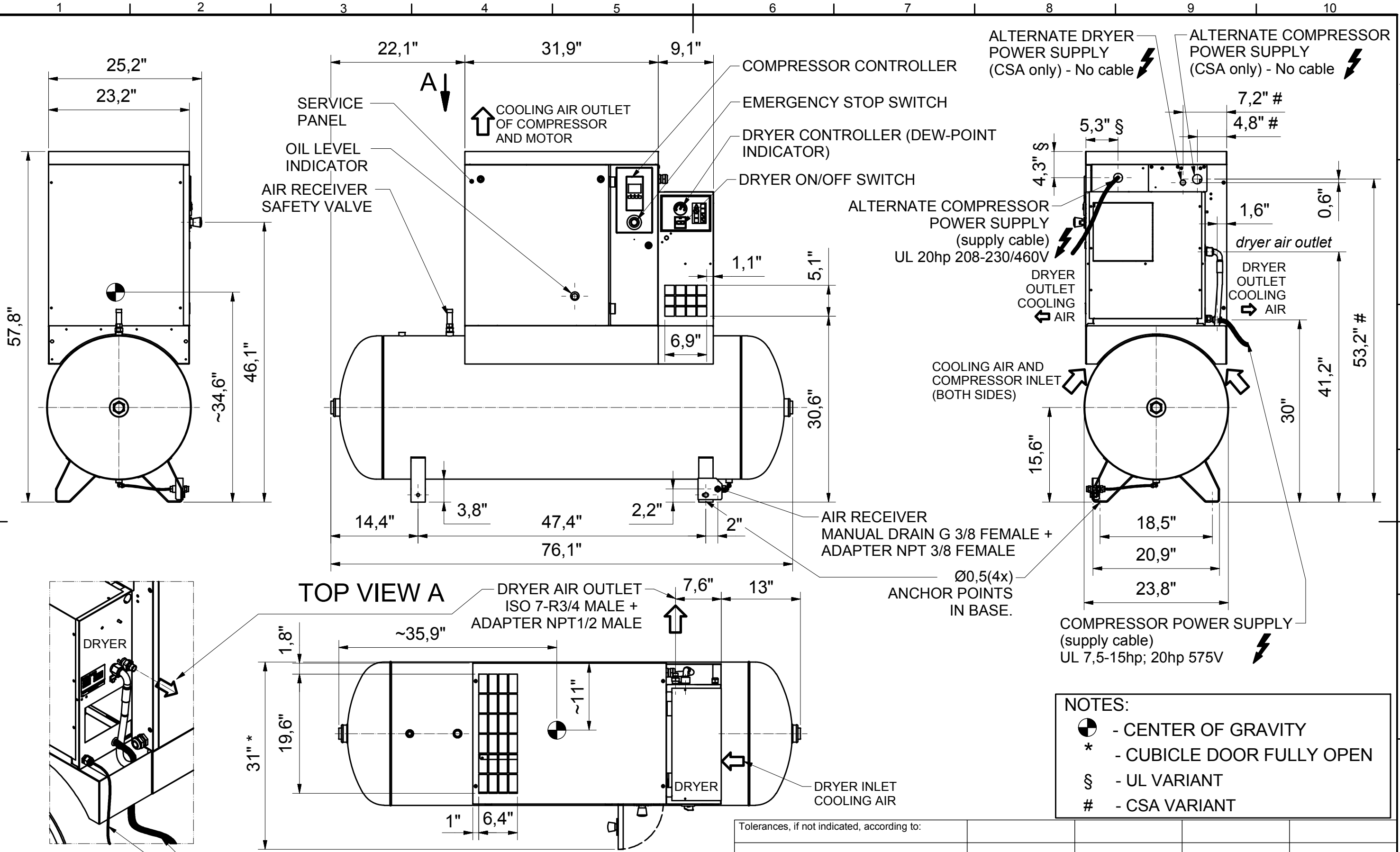


All materials supplied are in compliance with the requirements of the List of Prohibited Substances



NOTES:

- ⊕ - CENTER OF GRAVITY
- * - CUBICLE DOOR FULLY OPEN
- § - UL VARIANT
- # - CSA VARIANT

Tolerances, if not indicated, according to:

Power	Approx. weight
kW (Hp)	±20 (lb)
7,5 (10)	727
11 (15)	760
15 (20)	793

Name	DIMENSION DRAWING C55* MAXI DRYER V. TM		Confidentiality Class acc. to 1102 K
Material	Not applicable		Internal
Treatment	Not applicable		INV
Scale	1:15	Family	Compare
Drawn by	sgraser	Blank nr.	Replaces
Drawing format	Blank wt	Kg	Fin. wt.
STATUS	A3	N/A	
Des checked.	Prod checked.	Approved.	Date
			01/09/2016
Designation			Sheet 2 / 2
Approved			9828083263

DRYER POWER SUPPLY (supply cable) except CSA

DRYER DRAIN TUBE Ø0.55"

CONFIDENTIAL:
This document is our property and shall not without our permission be altered, copied, used for manufacturing or communicated to any other person or company.

-00				9828083261	
Ed	Position	Modified from	Date	Intr./Appd.	Parent 3D model Ed . Version 3D