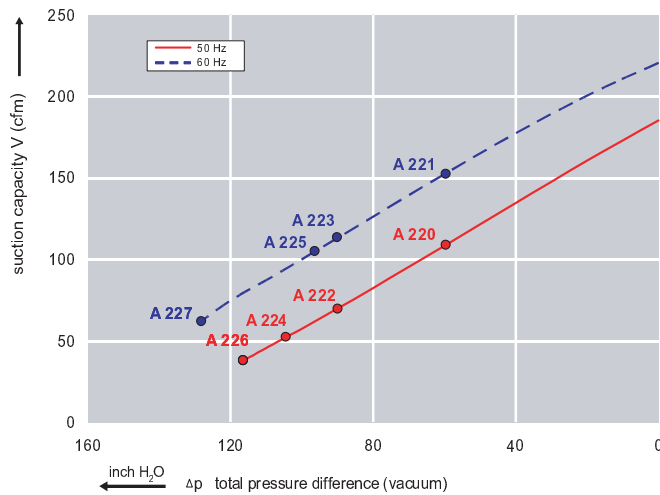




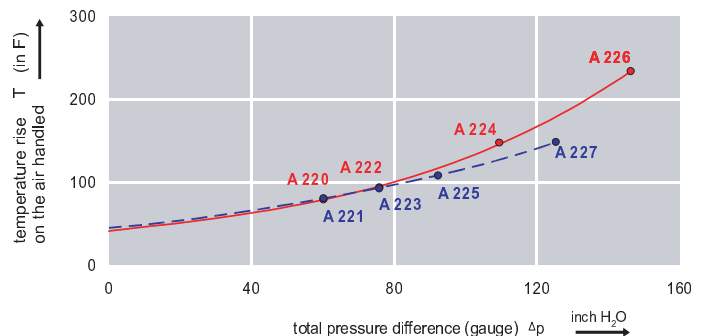
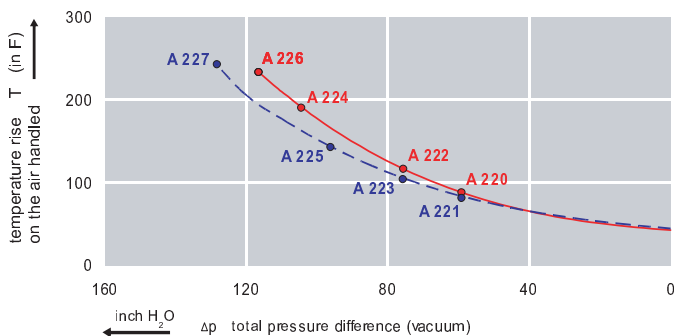
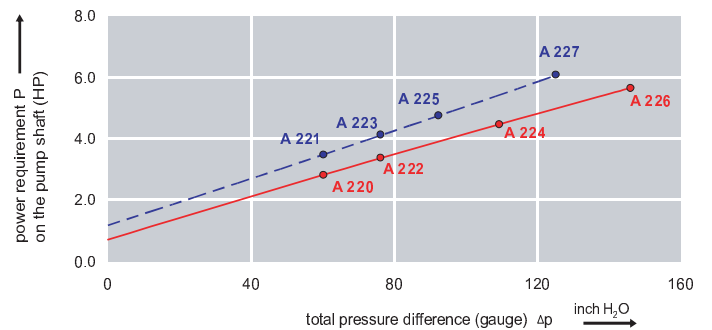
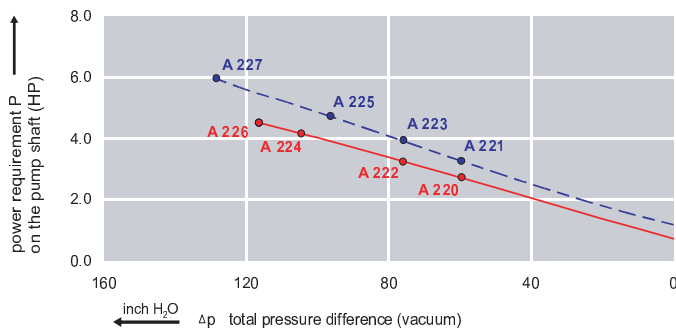
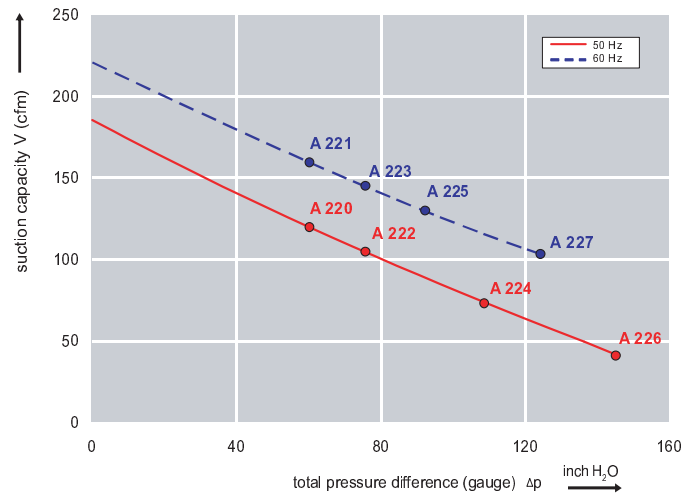
### Features:

- Cooler running, outboard bearing provides maintenance-free operation
- Environmentally friendly oil-free technology
- Extremely quiet operation
- All motors are standard TEFC with Class F insulation, UL recognized, CE Compliant  
*Explosion-Proof motors available*
- Custom construction blowers are available
- Rugged die cast aluminum construction

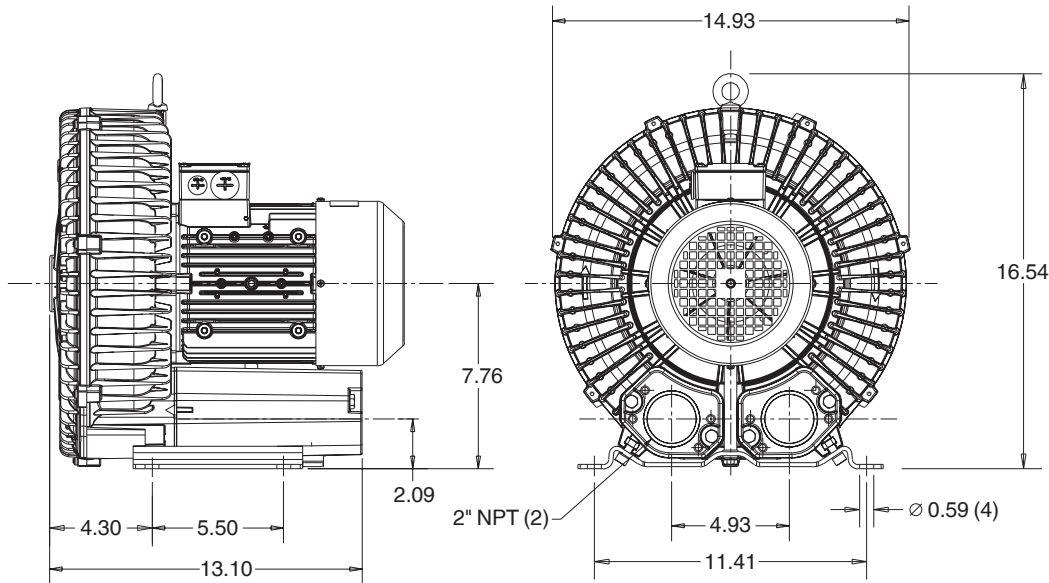
Performance curve for Vacuum pump



Performance curve for Compressor



### Dimensions: (inches)



### Recommended Accessories:

#### Relief valve:

VC61Z (Vacuum)  
PC61Z (Pressure)

#### Filter:

ATF-200-15124/1 (Vacuum)  
AFS-30-200-10 (Pressure)

Specifications subject to change without notice. Please contact factory for specification updates.

### Selection & Ordering Data - Type 3BA1600

Curve No.	Order No.	Fre-quency Hz	Rated power HP	Input voltage		Input current		Permissible total differential pressure		Sound pressure level dB(A)	Weight lbs
				V		A		Vacuum inch H2O	Compressor inch H2O		
<b>3~ 50/60 Hz IP55 insulation material class F</b>											
A 220	3BA1600-7AT06	50	2.15	200D ... 240D	345Y ... 415Y	8.5D	4.9Y	-64	60	69	57
A 221	3BA1600-7AT06	60	2.7	220D ... 250D	415Y ... 460Y	7.5D	4.4Y	-64	60	72	57
A 222	3BA1600-7AT16	50	2.95	200D ... 240D	345Y ... 415Y	9.7D	5.6Y	-85	70	70	64
A 223	3BA1600-7AT16	60	3.42	220D ... 250D	415Y ... 460Y	10.3D	6.0Y	-85	76	73	64
A 224	3BA1600-7AT26	50	4.02	200D ... 240D	345Y ... 415Y	12.5D	7.2Y	-104	108	70	75
A 225	3BA1600-7AT26	60	4.62	220D ... 250D	415Y ... 460Y	12.6D	7.3Y	-96	92	73	75
A 225	3BA1600-7AT25	60	4.60		575		5.8Y	-96	92	73	75
A 226	3BA1600-7AT36	50	5.36	200D ... 240D	345Y ... 415Y	17.3D	10.0Y	-116	145	70	93
A 227	3BA1600-7AT36	60	6.16	220D ... 250D	415Y ... 460Y	18.0D	10.4Y	-128	124	73	93

Suitable for 208 Volt Operation

All curves are rated at 14.7 psia and 68°F ambient conditions and are reported in SCFM referenced to 68° F and 14.696 psia sea level conditions. Curve values are nominal, actual performance may vary by up to 10% of the values indicated. For inlet temperatures above approximately 80° F or for handling gases other than air, please contact your Airtech sales representative for assistance. Fixed voltage motor tolerances are +/-10% and voltage range motors are +/-5%. Single phase motors are +/-5% tolerance.