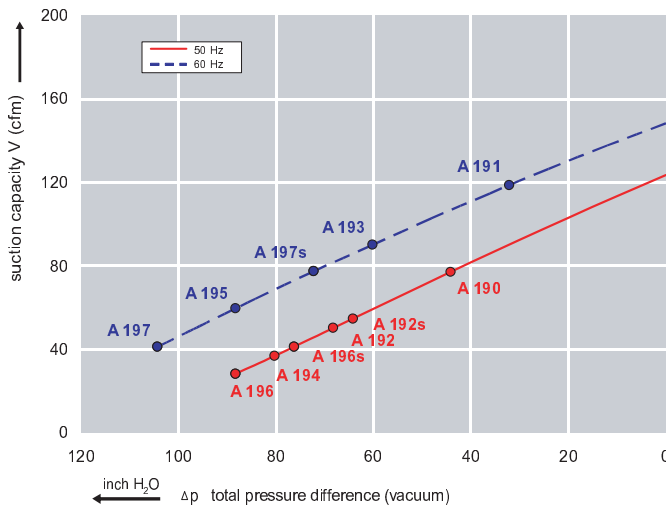




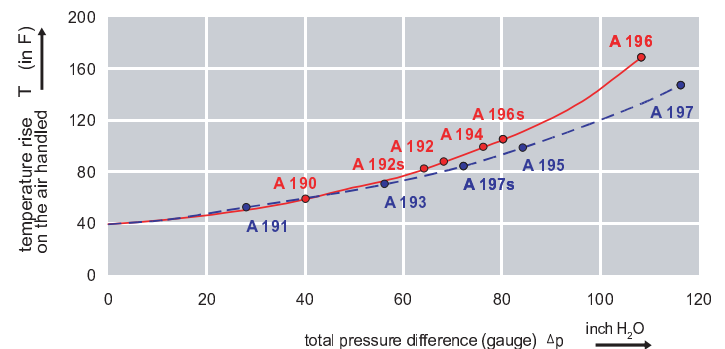
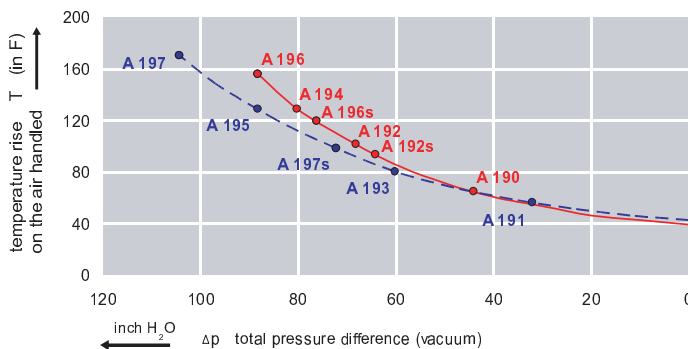
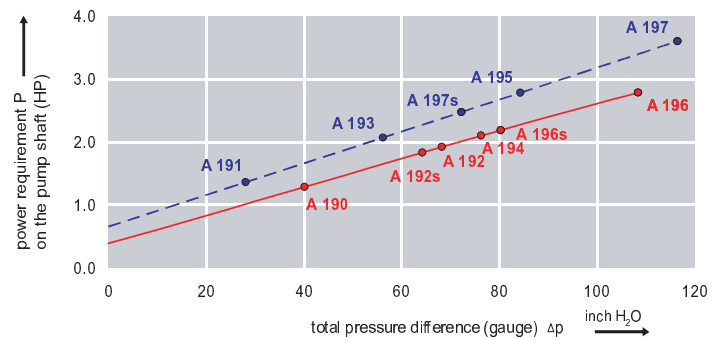
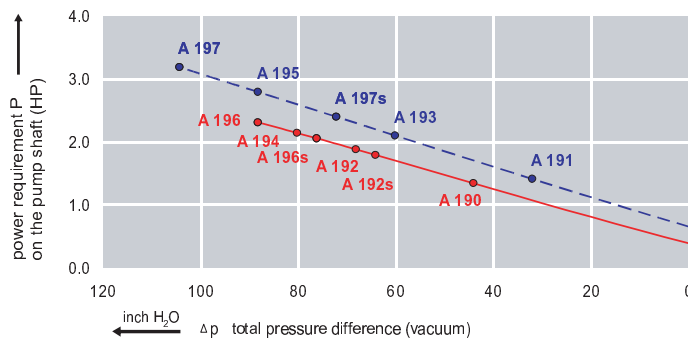
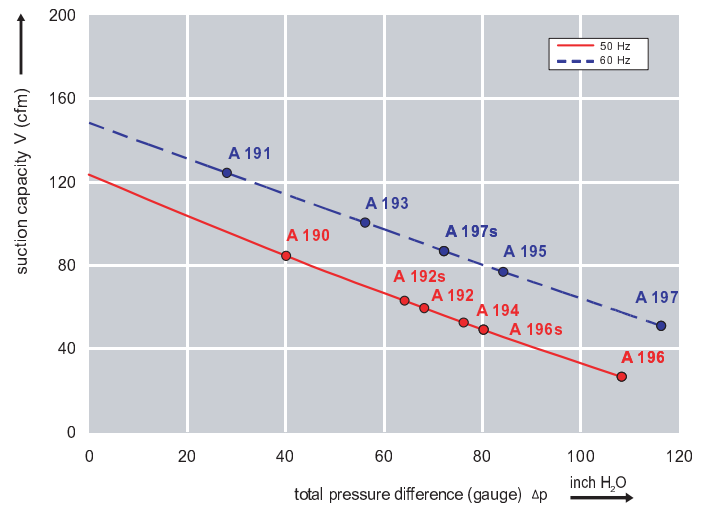
Features:

- Cooler running, outboard bearing provides maintenance-free operation
- Environmentally friendly oil-free technology
- Extremely quiet operation
- All motors are standard TEFC with Class F insulation, UL recognized, CE Compliant
Explosion-Proof motors available
- Custom construction blowers are available
- Rugged die cast aluminum construction

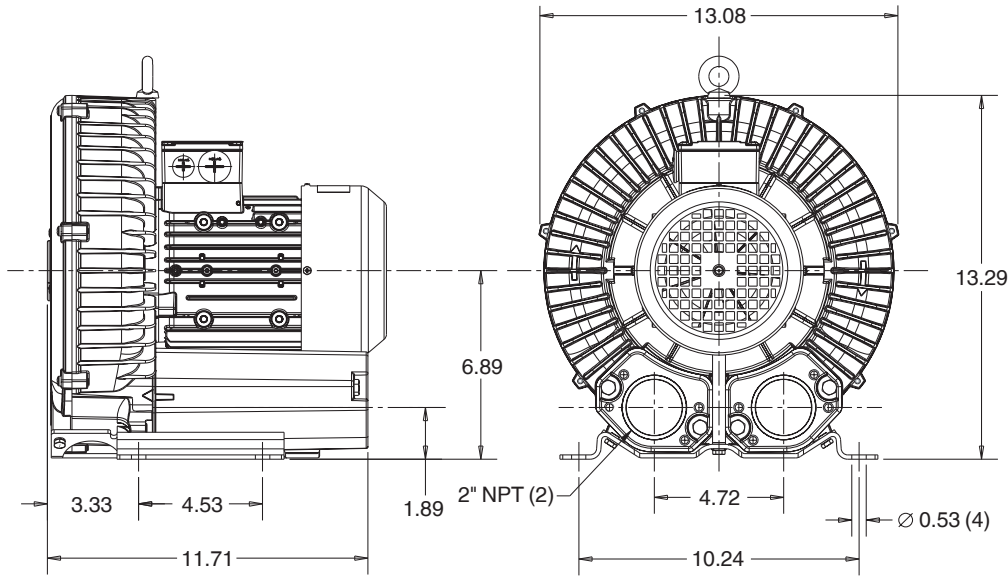
Performance curve for Vacuum pump



Performance curve for Compressor



Dimensions: (inches)



Recommended Accessories:

Relief valve:

VC61Z (Vacuum)
PC61Z (Pressure)

Filter:

ATF-200-15124/1
(Vacuum)
AFS-30-200-10
(Pressure)

Specifications subject to change without notice. Please contact factory for specification updates.

Selection & Ordering Data - Type 3BA1500

Curve No.	Order No.	Fre- quency Hz	Rated power HP	Input voltage		Input current		Permissible total differential pressure		Sound pressure level dB(A)	Weight lbs
				V		A		Vacuum inch H2O	Compressor inch H2O		
3~ 50/60 Hz IP55 insulation material class F											
A 190	3BA1500-7AT06	50	1.14	200D ... 240D	345Y ... 415Y	4.2D	2.4Y	-44	40	64	40
A 191	3BA1500-7AT06	60	1.27	220D ... 250D	415Y ... 460Y	4.35D	2.5Y	-32	28	70	40
A 192	3BA1500-7AT16	50	1.74	200D ... 240D	345Y ... 415Y	5.7D	3.3Y	-68	68	64	44
A 193	3BA1500-7AT16	60	2.0	220D ... 250D	415Y ... 460Y	5.5D	3.2Y	-60	56	70	44
A 194	3BA1500-7AT26	50	2.14	200D ... 240D	345Y ... 415Y	7.5D	4.3Y	-80	76	64	46
A 195	3BA1500-7AT26	60	2.75	220D ... 250D	415Y ... 460Y	7.5D	4.4Y	-88	84	70	46
A 196	3BA1500-7AT36	50	2.95	200D ... 240D	345Y ... 415Y	9.7D	5.6Y	-88	108	64	55
A 197	3BA1500-7AT36	60	3.42	220D ... 250D	415Y ... 460Y	9.0D	5.3Y	-104	116	70	55
1~ 50/60 Hz IP55 with attached capacitor for continuous operation											
A 196s	3BA1500-7AS35	50	2.0	115	230	22.0	11.0	-76	80	64	48
A 197s	3BA1500-7AS35	60	2.35	115	230	24.0	12.0	-72	72	70	48

Suitable for 208 Volt Operation

All curves are rated at 14.7 psia and 68°F ambient conditions and are reported in SCFM referenced to 68°F and 14.696 psia sea level conditions. Curve values are nominal, actual performance may vary by up to 10% of the values indicated. For inlet temperatures above approximately 80 °F or for handling gases other than air, please contact your Airtech sales representative for assistance.