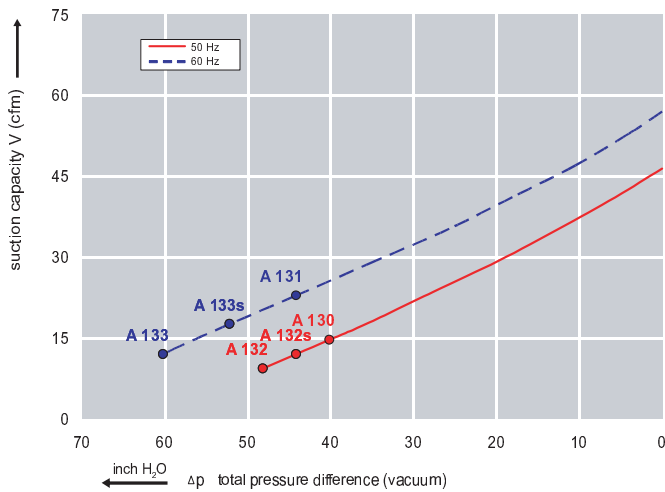




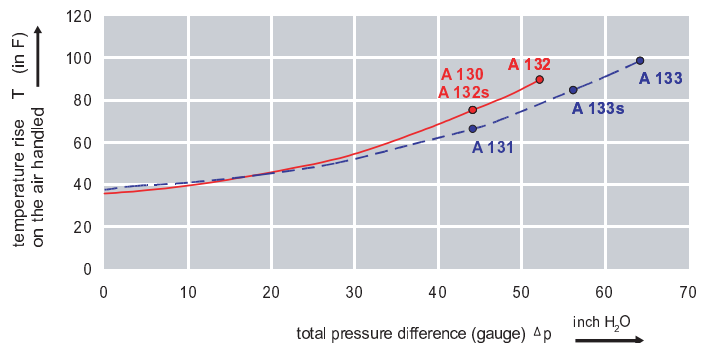
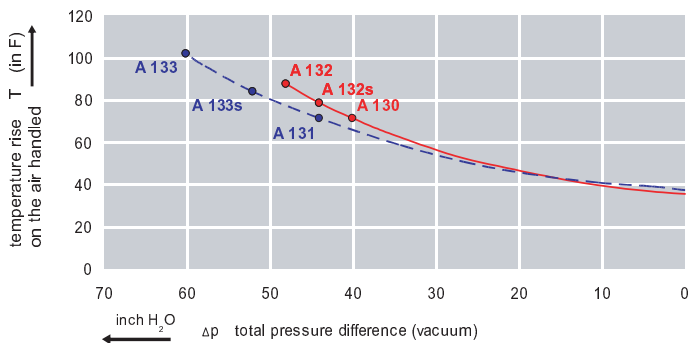
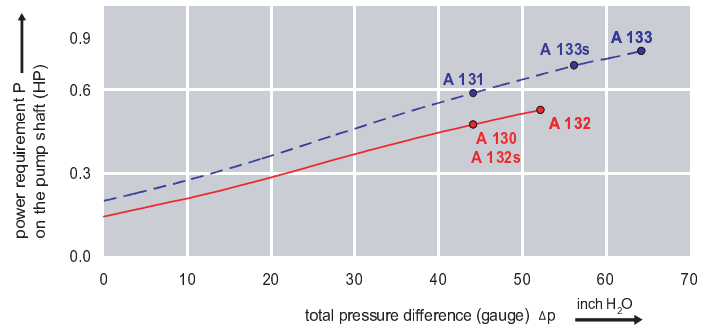
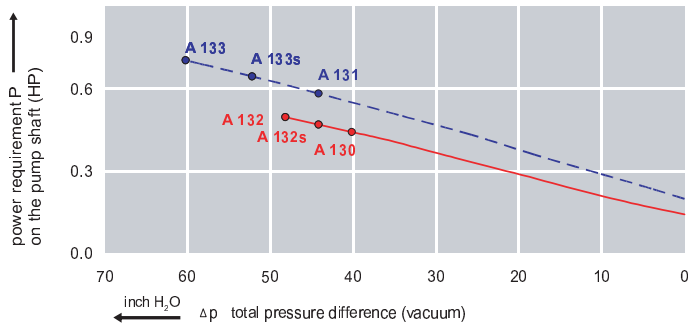
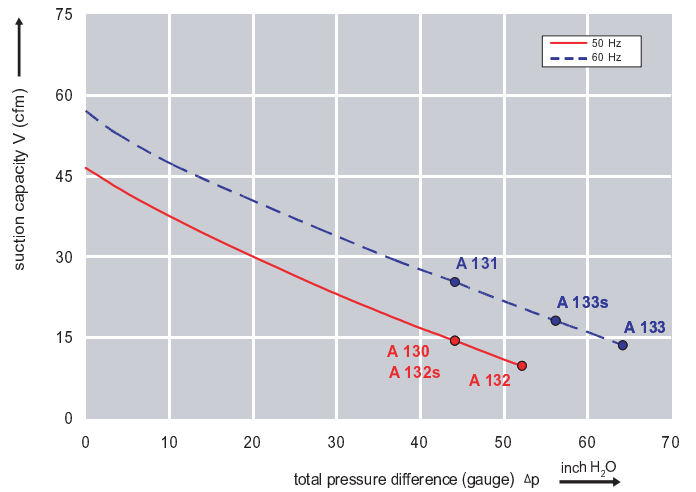
Features:

- Cooler running, outboard bearing provides maintenance-free operation
- Environmentally friendly oil-free technology
- Extremely quiet operation
- All motors are standard TEFC with Class F insulation, UL recognized, CE Compliant
Explosion-Proof motors available
- Custom construction blowers are available
- Rugged die cast aluminum construction

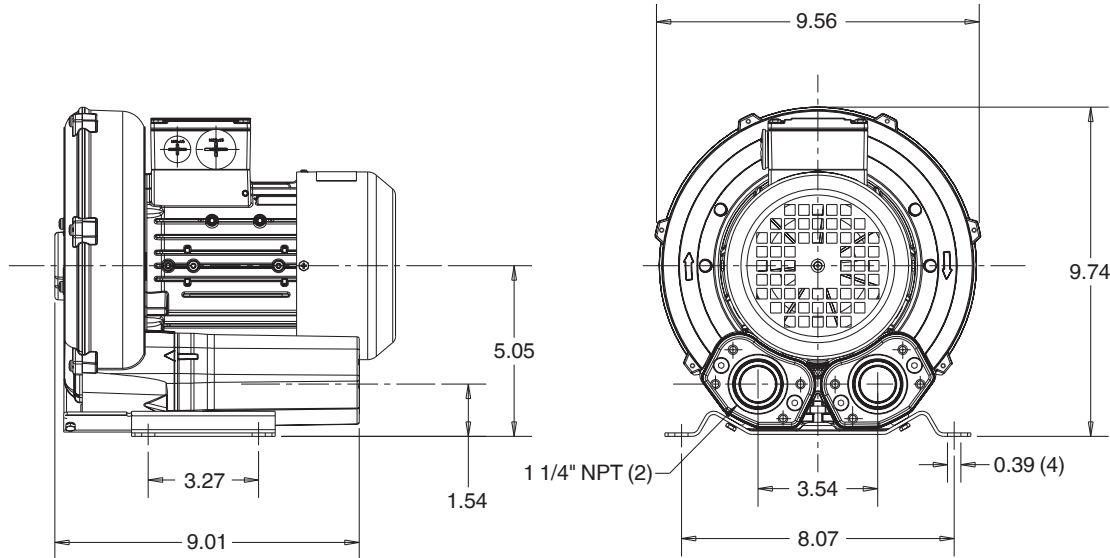
Performance curve for Vacuum pump



Performance curve for Compressor



Dimensions: (inches)



Recommended Accessories:

Relief valve:

VC51Z (Vacuum)
PC51Z (Pressure)

Filter:

ATF-125-1337 (Vacuum)
AFS-20-125-10 (Pressure)

Specifications subject to change without notice. Please contact factory for specification updates.

Selection & Ordering Data - Type 3BA1300

Curve No.	Order No.	Fre- quency Hz	Rated power HP	Input voltage		Input current A	Permissible total differential pressure		Sound pressure level dB(A)	Weight lbs	
				V			Vacuum inch H2O	Compressor inch H2O			
3~ 50/60 Hz IP55 insulation material class F											
A 130	3BA1300-7AT06	50	0.34	200D ... 240D	345Y ... 415Y	2.1D	1.2 Y	-40	44	53	18
A 131	3BA1300-7AT06	60	0.39	220D ... 250D	415Y ... 460Y	1.74D	1.0 Y	-44	44	56	18
A 132	3BA1300-7AT16	50	0.54	200D ... 240D	345Y ... 415Y	2.6D	1.5 Y	-48	52	53	22
A 133	3BA1300-7AT16	60	0.67	220D ... 250D	415Y ... 460Y	2.6D	1.5 Y	-60	64	56	22
1~ 50/60 Hz IP55 with attached capacitor for continuous operation											
A 132s	3BA1300-7AS15	50	0.50	115	230	5.4	2.7	-44	44	53	22
A 133s	3BA1300-7AS15	60	0.60	115	230	6.0	3.0	-52	56	56	22

Suitable for 208 Volt Operation

All curves are rated at 14.7 psia and 68° F ambient conditions and are reported in SCFM referenced to 68° F and 14.696 psia sea level conditions. Curve values are nominal, actual performance may vary by up to 10% of the values indicated. For inlet temperatures above approximately 80 °F or for handling gases other than air, please contact your Airtech sales representative for assistance.