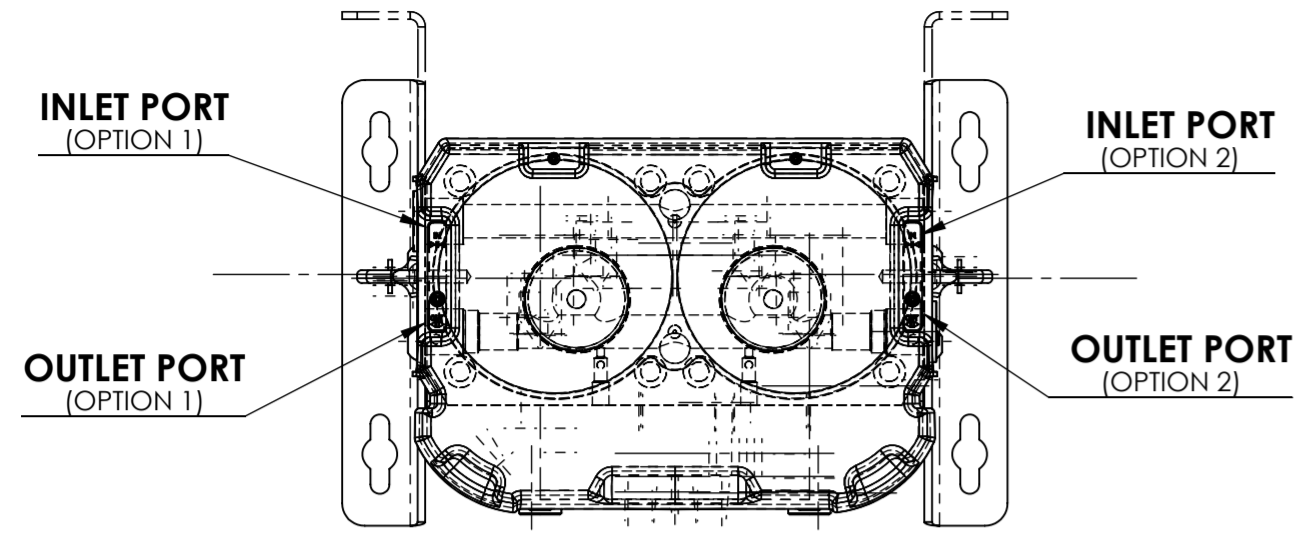
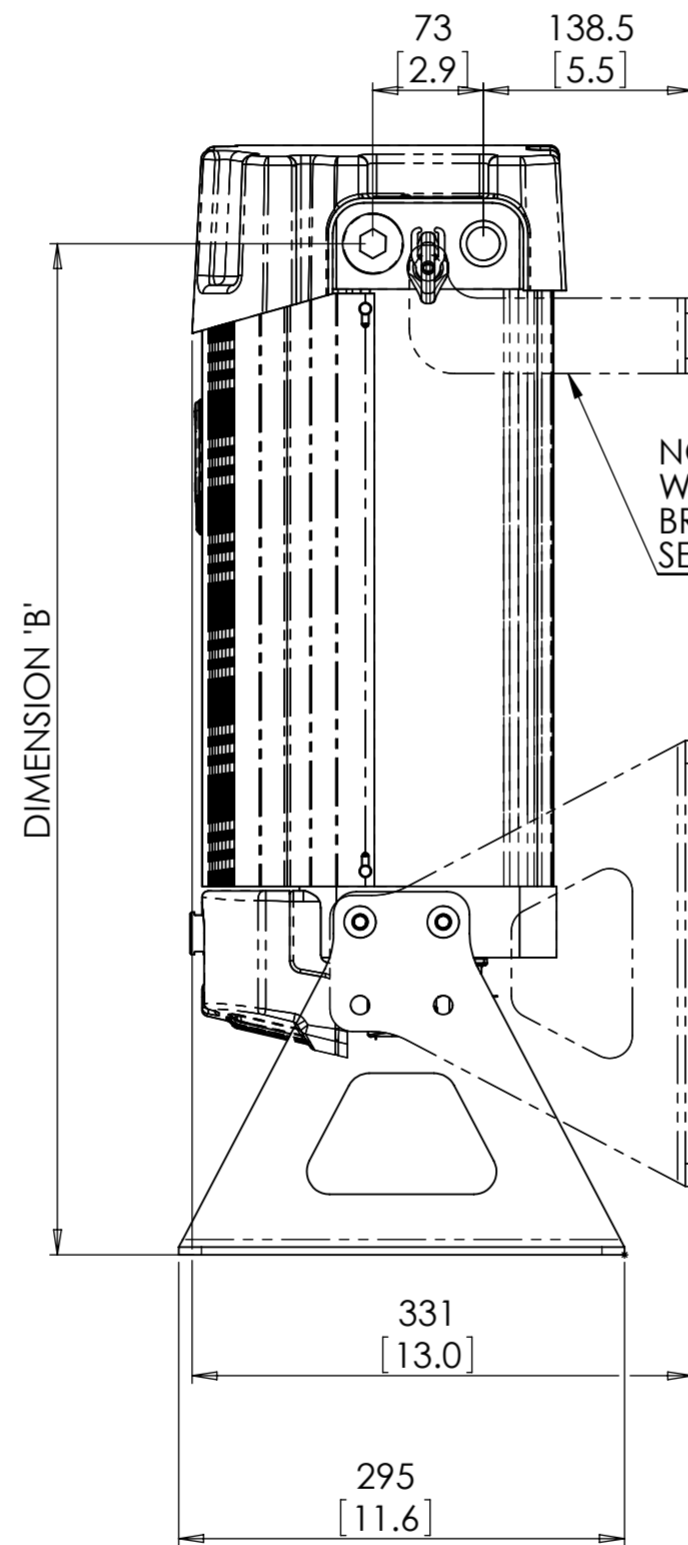
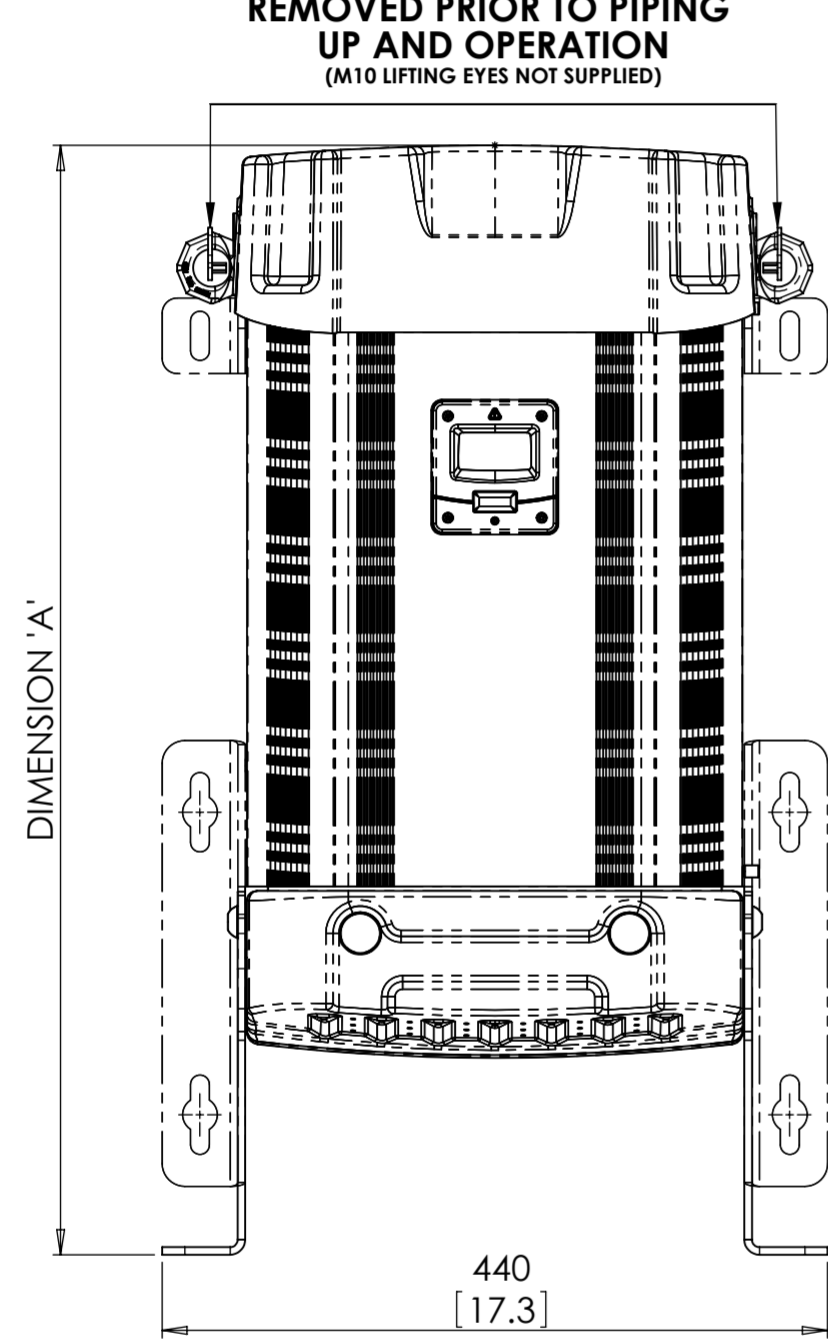


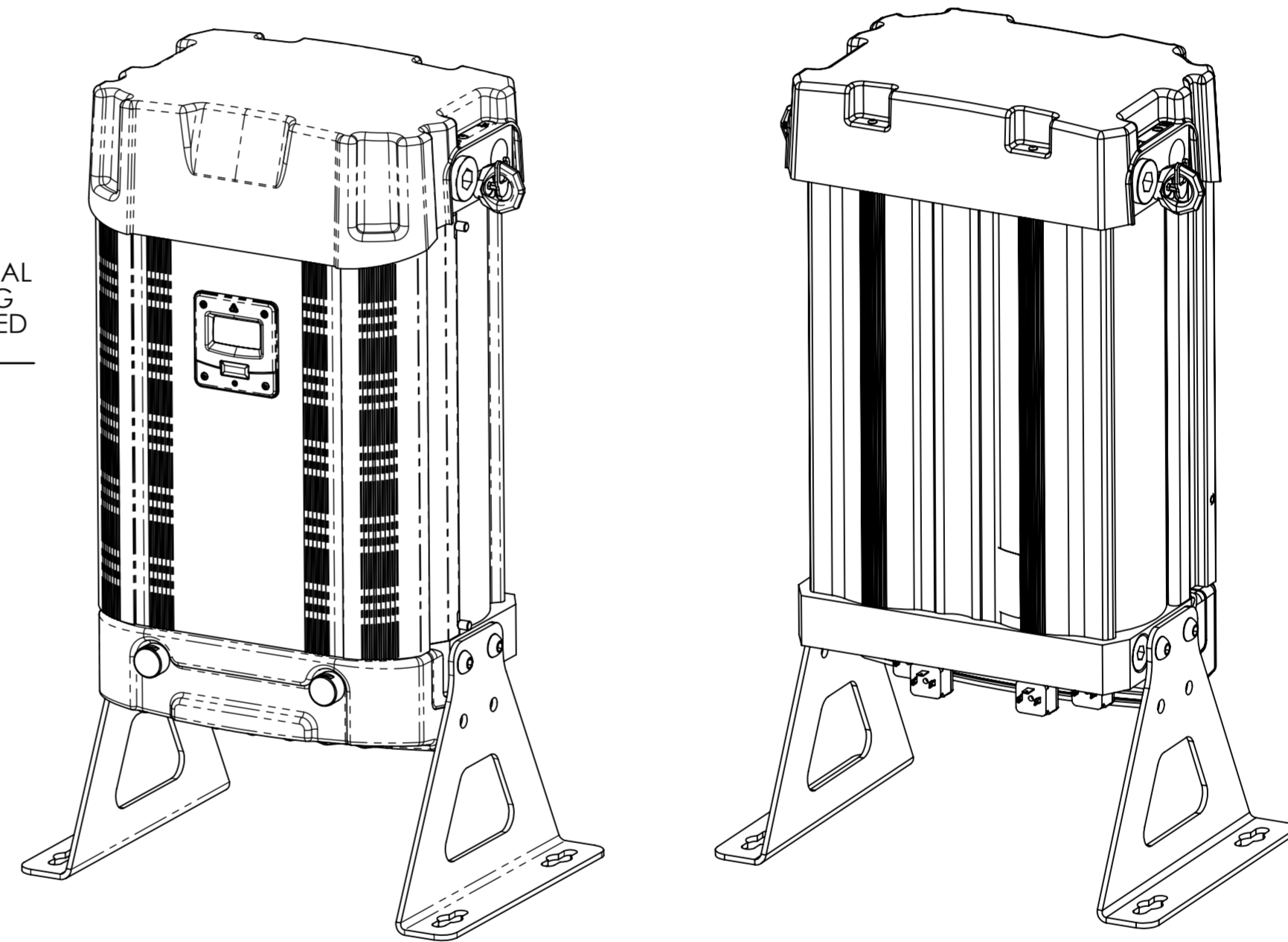
INLET / OUTLET CONNECTIONS



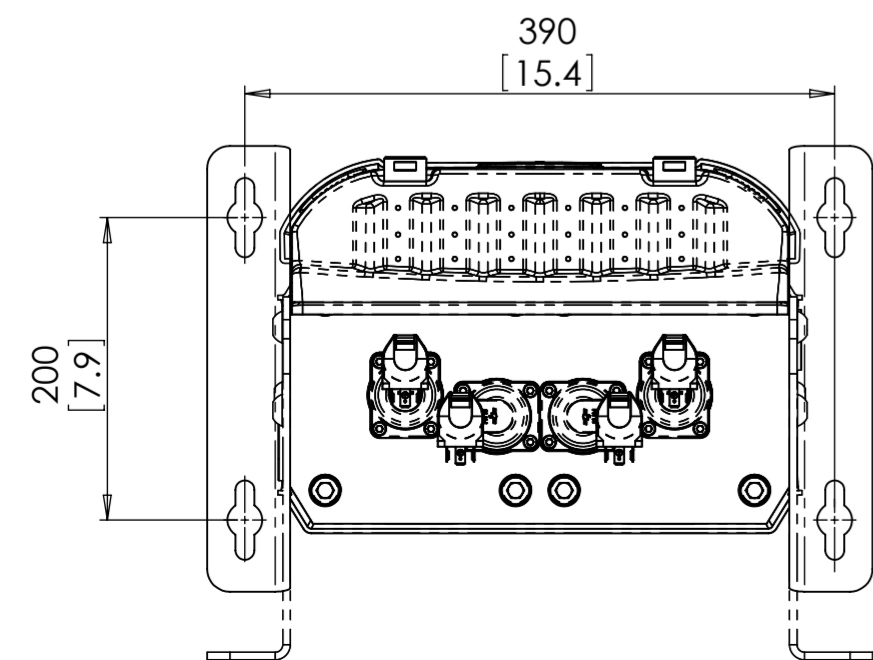
LIFTING EYES TO BE REMOVED PRIOR TO PIPING UP AND OPERATION
(M10 LIFTING EYES NOT SUPPLIED)



NOTE: ADDITIONAL WALL MOUNTING BRACKET SUPPLIED SEPERATELY



PICTORIAL VIEW



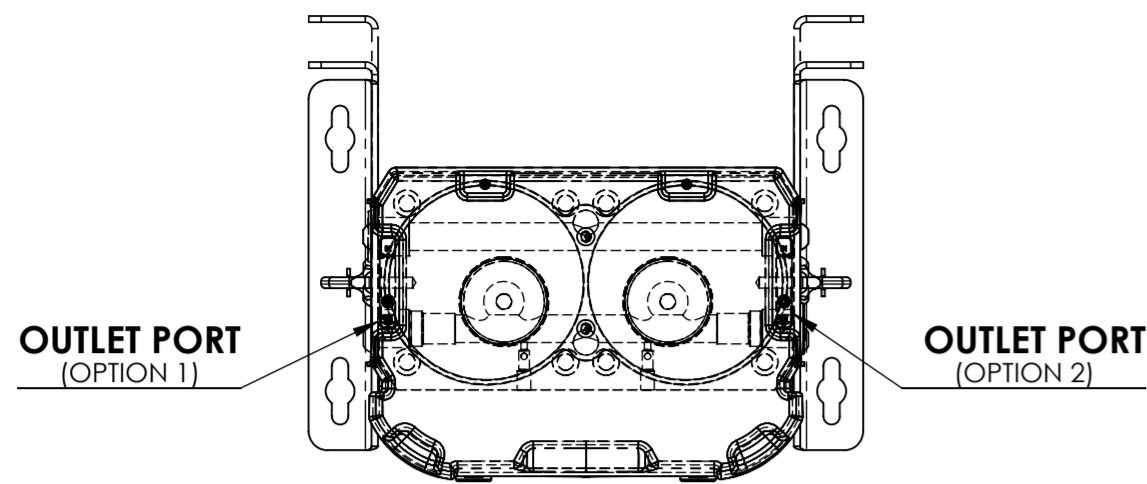
NOTE:
THIS SHEET SHOWS THE INLET / OUTLET POSITIONS FOR NDL-060 TO NDL-090.
FOR NDL-100 TO NDL-130 SEE SHEET 2.

MODEL No.	N-PSL PART No.	INLET FLOW RATE m3/hr/(scfm)	INLET / OUTLET PIPE SIZE	DIMENSION 'A' mm (in)	DIMENSION 'B' mm (in)	APPROX WEIGHT kg (lbs)
NDL-060	40-100-0060	59 (35)	G1"	734 (29.9)	670 (26.4)	40 (88)
NDL-070	40-100-0070	71(42)	G1"	734 (29.9)	670 (26.4)	40 (88)
NDL-080	40-100-0080	92 (54)	G1"	914 (36)	850 (33.5)	54 (119)
NDL-090	40-100-0090	115 (67.5)	G1"	914 (36)	850 (33.5)	54 (119)
NDL-100	40-100-0100	153 (90)	G1"	1089 (42.9)	1025 (40.4)	64 (141)
NDL-110	40-100-0110	183.5 (108)	G1"	1239 (48.8)	1175 (46.3)	76 (167)
NDL-120	40-100-0120	229 (135)	G1"	1489 (58.6)	1425 (56.1)	91 (200)
NDL-130	40-100-0130	306(180)	G1"	1839 (72.4)	1775 (69.9)	112 (247)

SPECIFICATION	
ISO 8573 - 1: 2001 QUALITY CLASSES	CLASS 2: DIRT: 1µ CLASS 2: WATER: -40°C (-40°F) PDP
MINIMUM WORKING PRESSURE	4 barg (58 psig)
MAXIMUM WORKING PRESSURE	16 barg (232 psig)
POWER SUPPLY	100 - 240V AC / 50 - 60 Hz
MINIMUM INLET TEMPERATURE	1.5°C (35°F)
MAXIMUM INLET TEMPERATURE	50°C (122°F)

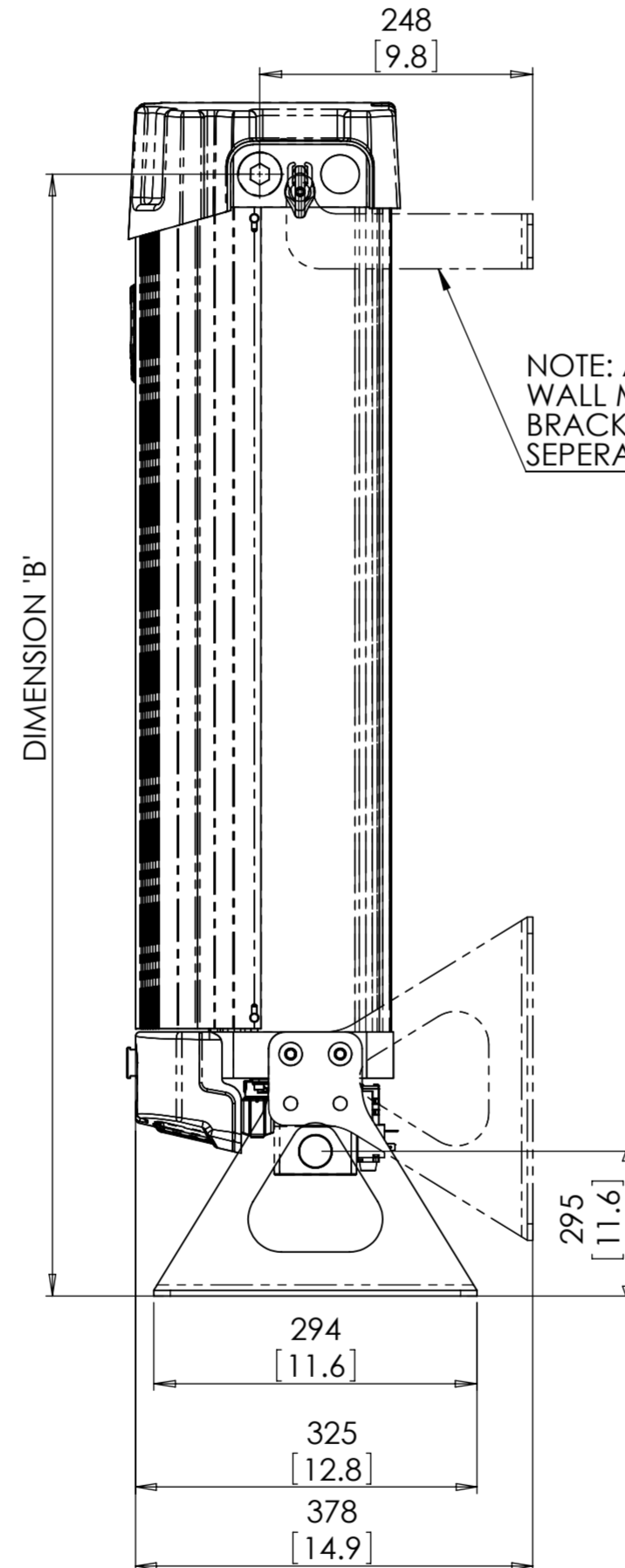
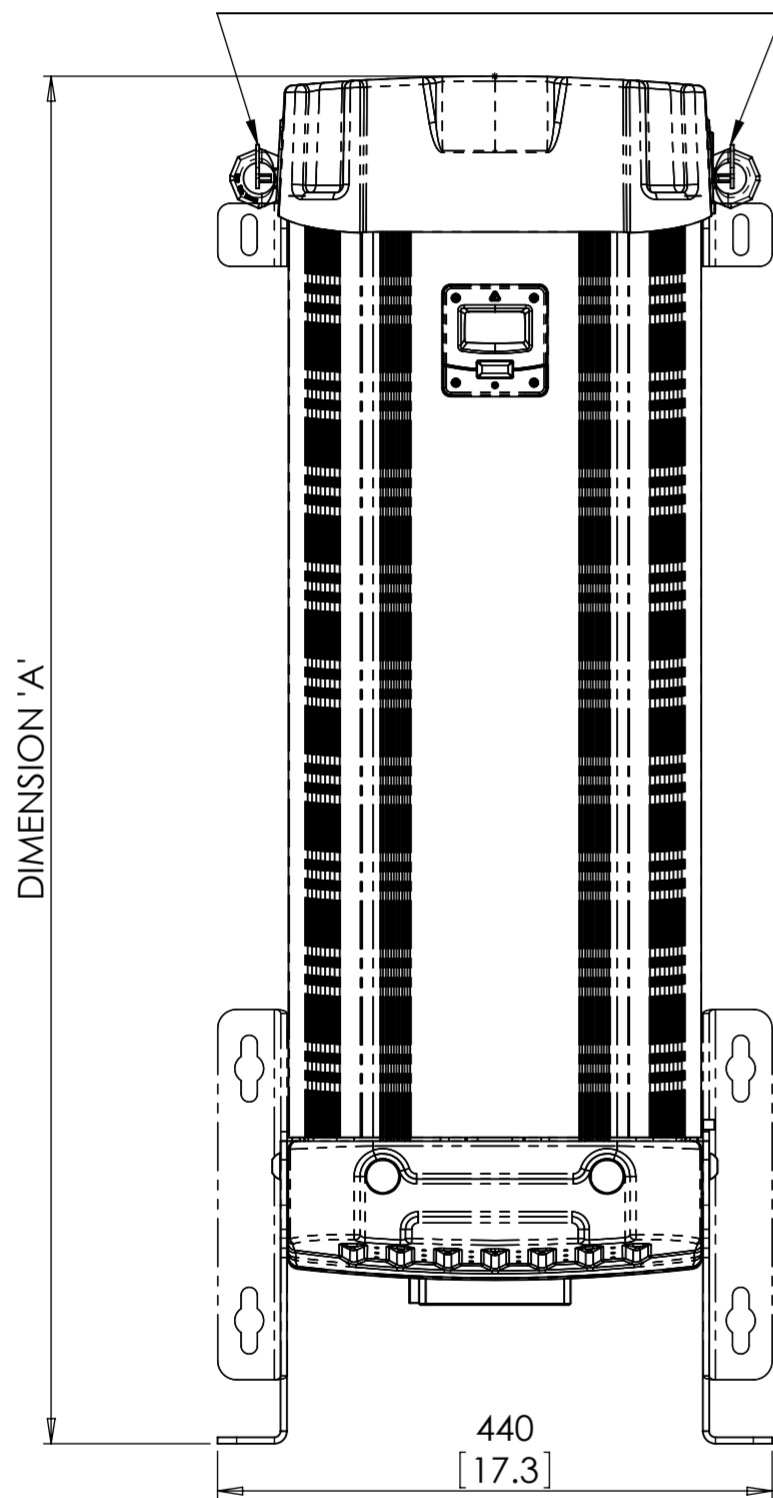
DRAWN	CHECKED	APPROVED
NAME: IC	ME	ME
DATE: 17-08-10	19-08-10	19-08-11
nano-porous systems Ltd www.n-psl.com		
<small>© NANO-POROUS SYSTEMS LTD 2010. THE ORIGINAL OF THIS DRAWING IS COPYRIGHT AND CONTAINS CONFIDENTIAL INFORMATION. IT IS THE PROPERTY OF NANO POROUS SYSTEMS LTD WITHOUT WHOSE PERMISSION IT MAY NOT BE COPIED, SHOWN OR HANDED TO A THIRD PARTY OR OTHERWISE USED AND IT IS TO BE RETURNED PROMPTLY UPON REQUEST TO NANO POROUS SYSTEMS LTD.</small>		
SCALE: DO NOT SCALE DRAWING	3RD ANGLE	SHEET 1 OF 2
MATERIAL: SEE COMPONENT DRAWINGS	REVISION: C-03	
TITLE: N-PSL COMPRESSED AIR DRYER (NDL-060 - NDL-130)		
DRAWING NO. PD-0003	A2	

OUTLET CONNECTIONS

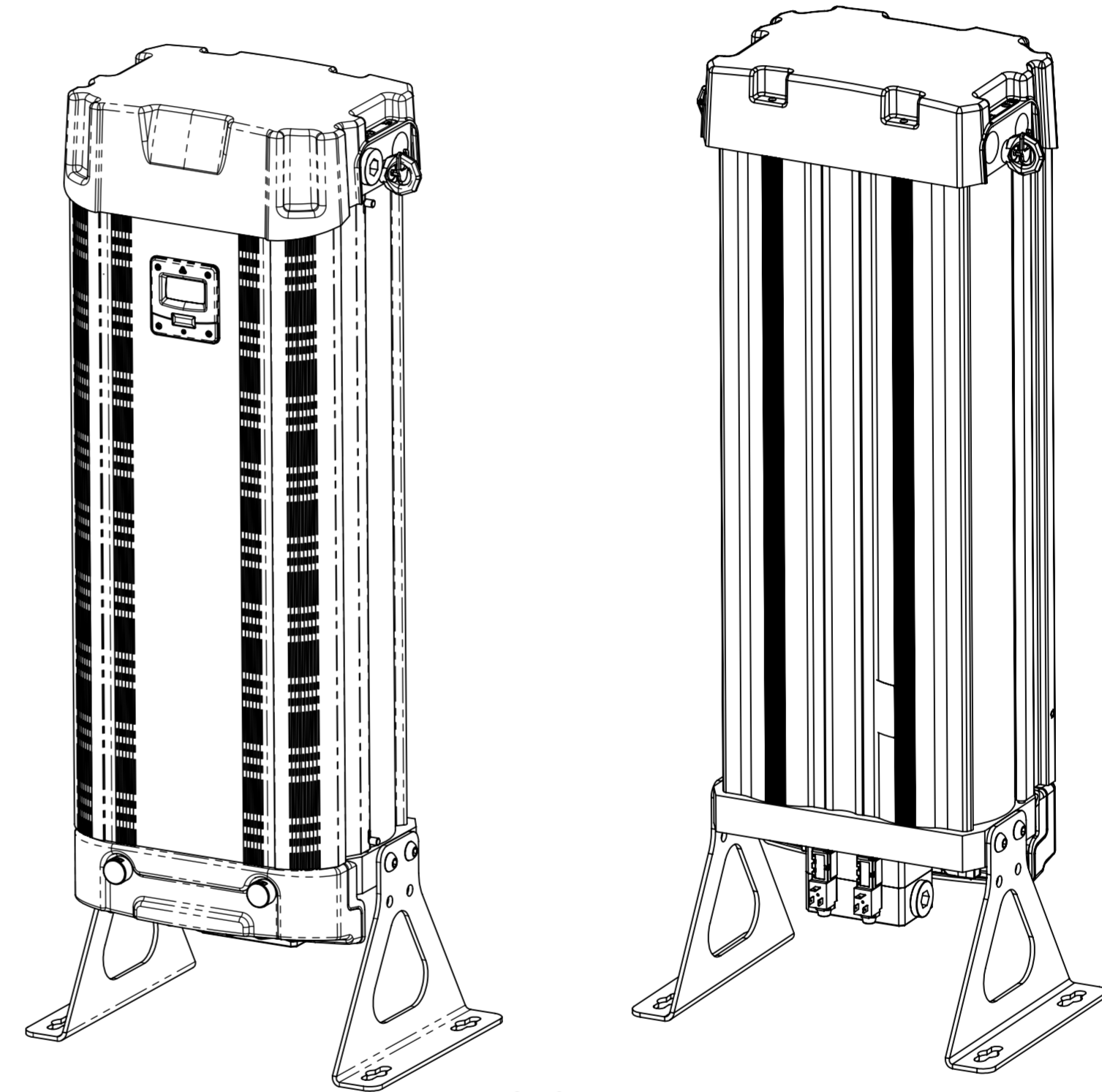


MODEL No.	N-PSL PART No.	INLET FLOW RATE m3/hr/(scfm)	INLET / OUTLET PIPE SIZE	DIMENSION 'A' mm (in)	DIMENSION 'B' mm (in)	APPROX WEIGHT kg (lbs)
NDL-060	40-100-0060	59 (35)	G1"	734 (29.9)	670 (26.4)	40 (88)
NDL-070	40-100-0070	71(42)	G1"	734 (29.9)	670 (26.4)	40 (88)
NDL-080	40-100-0080	92 (54)	G1"	914 (36)	850 (33.5)	54 (119)
NDL-090	40-100-0090	115 (67.5)	G1"	914 (36)	850 (33.5)	54 (119)
NDL-100	40-100-0100	153 (90)	G1"	1089 (42.9)	1025 (40.4)	64 (141)
NDL-110	40-100-0110	183.5 (108)	G1"	1239 (48.8)	1175 (46.3)	76 (167)
NDL-120	40-100-0120	229 (135)	G1"	1489 (58.6)	1425 (56.1)	91 (200)
NDL-130	40-100-0130	306(180)	G1"	1839 (72.4)	1775 (69.9)	112 (247)

LIFTING EYES TO BE
REMOVED PRIOR TO PIPING
UP AND OPERATION
(M10 LIFTING EYES NOT SUPPLIED)

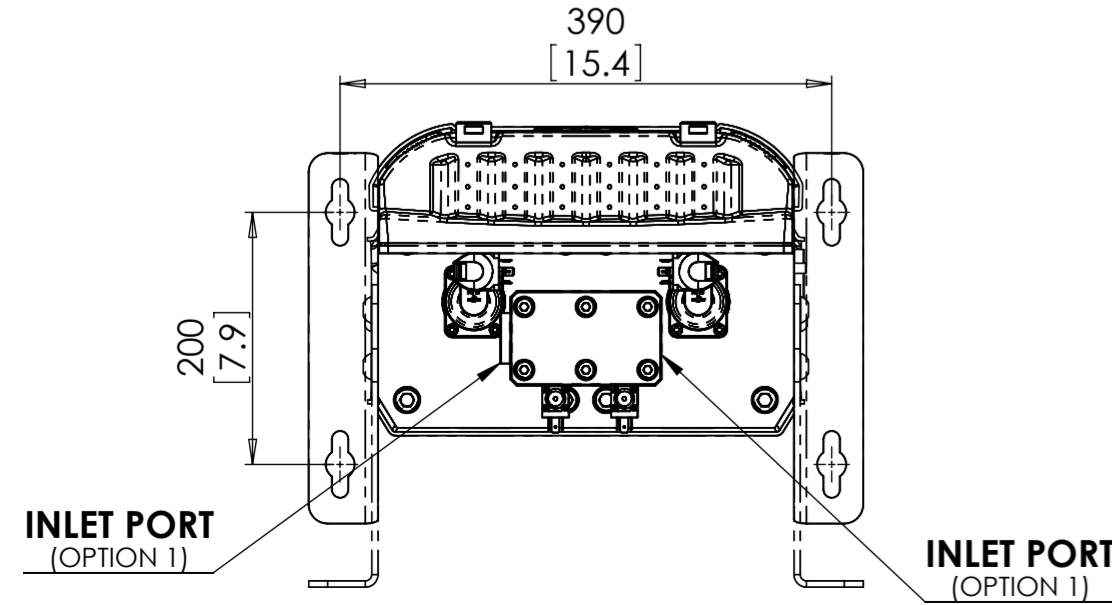


NOTE: ADDITIONAL
WALL MOUNTING
BRACKET SUPPLIED
SEPERATELY



PICTORIAL VIEW

NOTE:
THIS SHEET SHOWS THE INLET / OUTLET
POSITIONS FOR NDL-100 TO NDL-130.
FOR NDL-060 TO NDL-090 SEE SHEET 1.



INLET CONNECTIONS

SPECIFICATION	
ISO 8573 - 1: 2001 QUALITY CLASSES	CLASS 2: DIRT: 1µ CLASS 2: WATER: -40°C (-40°F) PDP
MINIMUM WORKING PRESSURE	4 barg (58 psig)
MAXIMUM WORKING PRESSURE	16 barg (232 psig)
POWER SUPPLY	100 - 240V AC / 50 - 60 Hz
MINIMUM INLET TEMPERATURE	1.5°C (35°F)
MAXIMUM INLET TEMPERATURE	50°C (122°F)

DRAWN	CHECKED	APPROVED
NAME: IC	ME	ME
DATE: 17-08-10	19-08-10	19-08-11

nano-porous systems Ltd
www.n-psl.com

nano
NANO-POROUS SYSTEMS LTD

© NANO-POROUS SYSTEMS LTD 2010.
THE ORIGINAL OF THIS DRAWING IS COPYRIGHT AND CONTAINS CONFIDENTIAL INFORMATION.
IT IS THE PROPERTY OF NANO POROUS SYSTEMS LTD WITHOUT WHOSE PERMISSION IT MAY NOT BE
COPIED, SHOWN OR HANDED TO A THIRD PARTY OR OTHERWISE USED AND IT IS TO BE RETURNED
PROMPTLY UPON REQUEST TO NANO POROUS SYSTEMS LTD.

SCALE: DO NOT SCALE DRAWING	3RD ANGLE	SHEET 2 OF 2
MATERIAL: SEE COMPONENT DRAWINGS	REVISION: C-03	
TITLE: N-PSL COMPRESSED AIR DRYER (NDL-060 - NDL-130)		
DRAWING NO. PD-0003	A2	